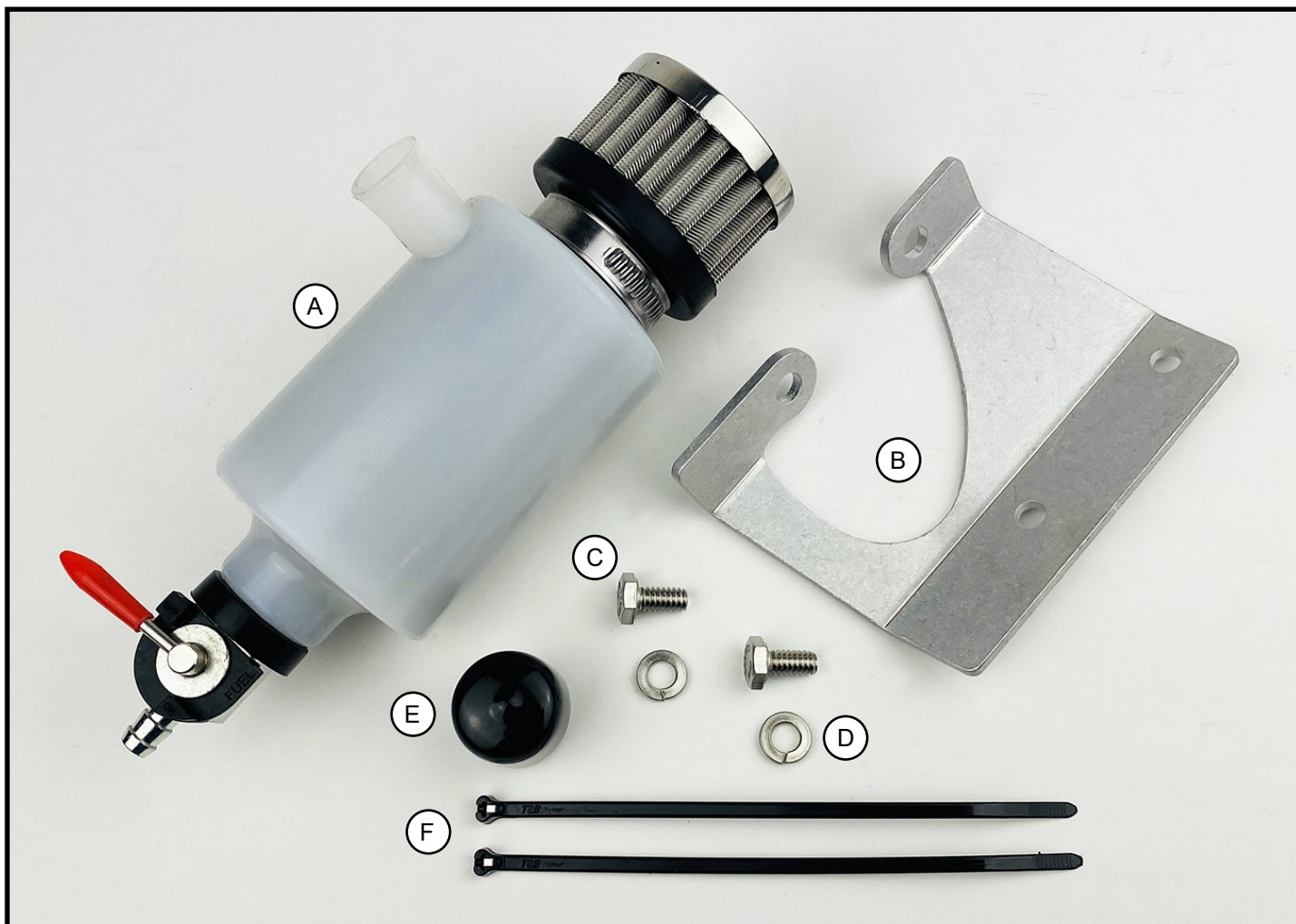




RIVA RACING
PERFORMANCE PRODUCTS & ACCESSORIES

Yamaha Catch Can/Engine Breather Kit

RY19040-BCC



Applications: 2012 & Newer Yamaha 1.8L Engines

Approximate Installation Time: 0.5hr

Recommended Specialty Tools:

N/A

Part #

N/A

Required Materials:

N/A

Part #

N/A



RIVA RACING
PERFORMANCE PRODUCTS & ACCESSORIES

Yamaha Catch Can/Engine Breather Kit

RY19040-BCC

Notes and Precautions

We strongly recommend the use of a service manual to familiarize yourself with the various components and procedures involved with this installation. Please note that some of the original hardware removed in the disassembly process will be used in the installation process. These instructions have been written in step-by-step format and refer to illustrations. Read through instructions entirely before performing installation. Please follow these step-by-step instructions and illustrations carefully.

***** ALLOW ENGINE TO COOL COMPLETELY BEFORE PERFORMING INSTALLATION *****

***** NO SMOKING *** NO SMOKING *** NO SMOKING *****

CAUTION: Whenever using electric or battery operated tools inside the hull be sure it is well ventilated and no fumes are present. Failure to do so could result in a fire, or explosion and serious personal injury or death.

This kit is not intended for use on pollution controlled vehicles. Installation on pollution controlled vehicles may constitute a violation of state or local statutes.

COMPONENT LIST

Item	Description	RIVA Part #	Qty. Req.	Notes
A	Breather Catch Can	RTL-RY19040-CC	1	Installed in & on Catch Can
	Sponge Foam	MSF-RS19050-BCC-4	1	
	Petcock	NI-RY13130-PC	1	
	Filter	ABR-025-SL	1	
B	Aluminum Mounting Bracket	FSM-RY19040-BCC	1	
C	Bolt, (1/4-20 x 1/2") HHCS	92240A537	2	
D	Lock Washer, (1/4")	92147A029	2	
E	Vinyl Cap, (5/8" x 1" Inside Height X 7/8" To 15/16" ID)	9753K86	1	
F	Zip Tie, (5"), Med.	TY24MX	2	

Installation Instructions

Remove engine cover (2 screws), if applicable, to access exhaust manifold. (Figure 1)

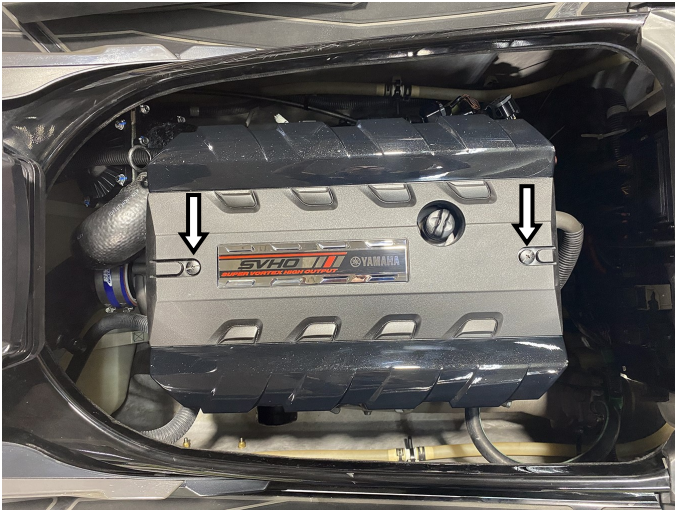


Figure 1

Remove engine breather hose (connected to engine crankcase and air intake tube or aftermarket engine breather kit filter) and set aside for use later. (Figure 2)

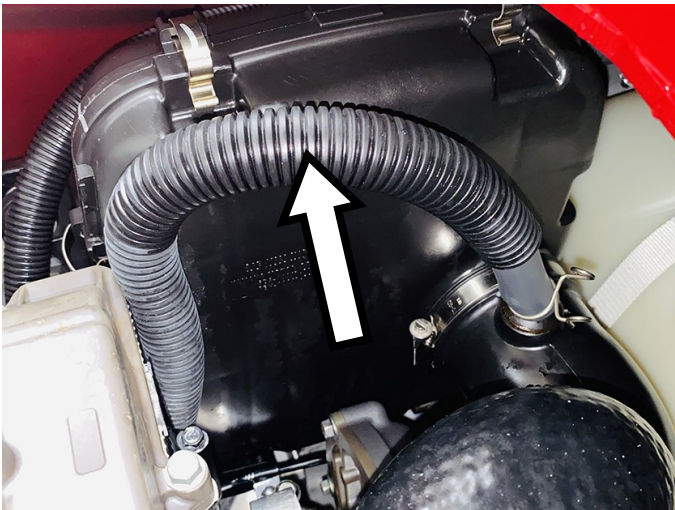


Figure 2

If engine vapor return system was utilized install supplied Vinyl Cap onto open fitting on air intake system and secure with supplied zip tie. (Figure 3)



Figure 3

CATCH CAN INSTALLATION

On the exhaust manifold, remove the two forwardmost bolts. (Figure 4)

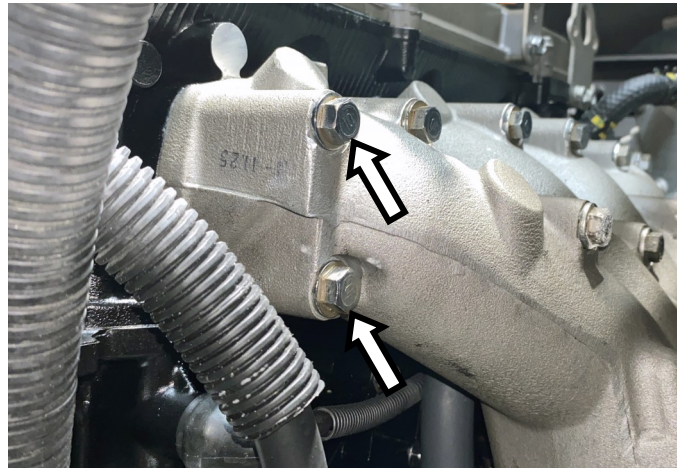


Figure 4

Install supplied Aluminum Mounting Bracket onto exhaust manifold and secure with stock bolts. **NOTE: Apply blue Loctite to threads. Torque bolts to 26 ft•lbs / 3.5 kg•fm. DO NOT OVERTIGHTEN bolts.** (Figure 5)

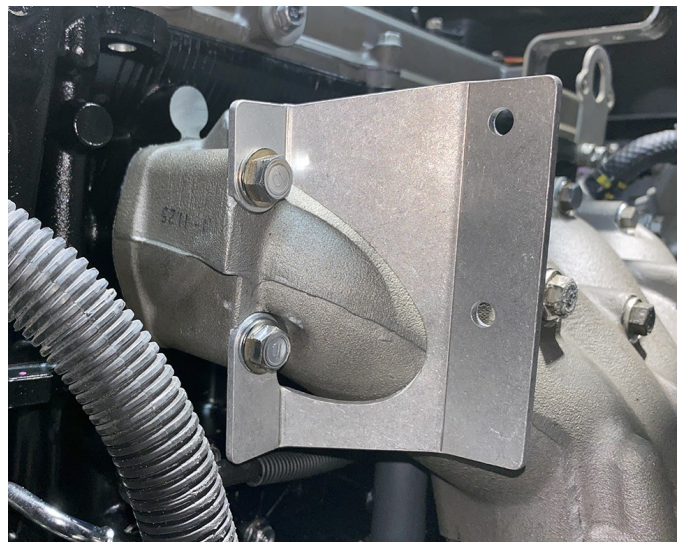


Figure 5

PROCEED TO NEXT PAGE

Installation Instructions

Install supplied Catch Can onto aluminum mounting bracket using supplied bolts and lock washers. **NOTE: Apply blue Loctite to threads. Torque bolts to 3.7 ft•lbs / 0.5 kg•fm. DO NOT OVERTIGHTEN bolts.** (Figure 6)



Figure 6

Modify previously removed engine breather hose by trimming each end as specified in illustration below. (Figure 7)

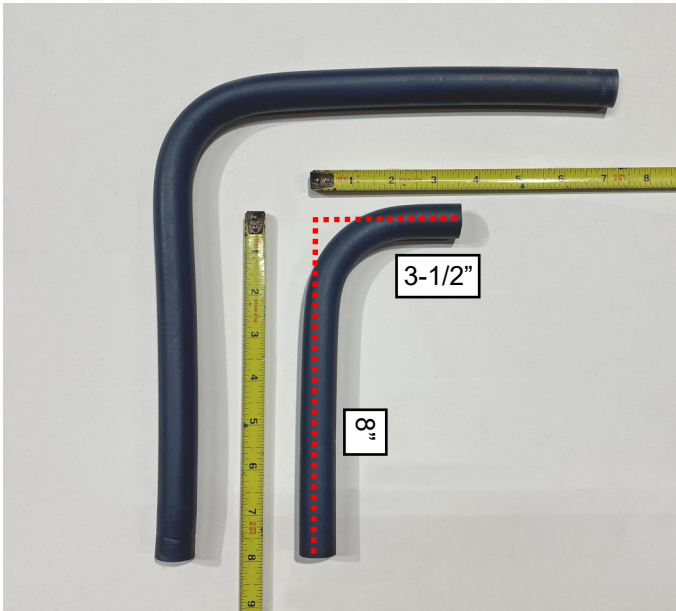


Figure 7

Trim protective sheathing to fit over hose without interfering with ends where it will be secured. (Figure 8)



Figure 8

Install longer end of engine breather hose (8") onto open fitting on crankcase below Catch Can. Secure with supplied zip tie (A). Slide protective sheathing over engine breather hose (B). Attach open end of engine breather hose to open fitting on Catch Can and secure with previously removed spring clamp (C). (Figure 9)

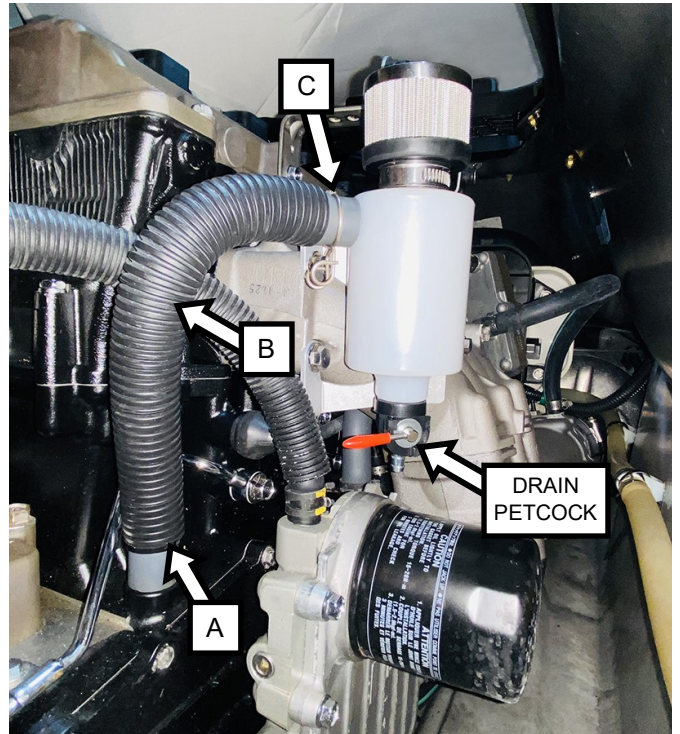


Figure 9

Replace engine cover, if applicable. **NOTE: Apply blue Loctite to threads. Do not overtighten screws.**

PROCEED TO NEXT PAGE

Installation Instructions

Check bilge for tools, rags, etc.

Run craft on a flush kit to check for proper operation.

Catch Can Use & Maintenance:

- Engine oil level should be at or just below half-way mark on dipstick.
- Follow proper engine oil level inspection procedure outlined in owner's manual.
- Check and drain Catch Can as needed.
- Do not use harsh chemicals to clean Catch Can (acetone, carb cleaner, brake cleaner, etc).

Remember, the water belongs to everyone.

Please ride responsibly and respect the environment!

Technical Support

For answers to questions regarding installation or trouble shooting RIVA Performance Products contact:

RIVA Technical Support directly at (954) 247-0705 or by e-mail at tech_support@rivaracing.com.

Limited Warranty

RIVA Engine Breather/Catch Can Kits carry a 6-month limited warranty to the original purchaser. They are warranted to be free of defects in materials and workmanship under normal use and service. Customer modified components will be void of warranty. This warranty is limited to defects in the primary components only. Finish and/or wear marks in or on primary components are not covered under this warranty.

RIVA Racing's liability is expressly limited to the repair or replacement of the components contained within or associated with this kit. RIVA Racing agrees to repair or at RIVA's option, replace any defective unit without charge, if product is returned to RIVA Racing freight prepaid within the warranty period. Any equipment returned which, in RIVA's opinion, has been subjected to misuse, abuse, overheating or accident shall not be covered by this warranty.

RIVA Racing shall have no liability for special, incidental or consequential damages or injury to persons or property from any cause arising from the sale, installation or use of this product.

No other warranty, express or implied, including, but not limited to the implied warranties of merchantability and fitness for a particular purpose, applies. Various states do not allow for the limitation of incidental or consequential damages and therefore the above exclusion or limitation may not apply to you.

Warranty does not include the expenses related to freight or transportation of parts or compensation for any inconvenience or loss of use while being repaired. A copy of the original invoice and a Return Authorization Number (RA#) must accompany all warranty claims.