



RIVA RACING
PERFORMANCE PRODUCTS & ACCESSORIES

Sea-Doo LH. Billet Control Housing

PART# - RS2406013



Applications: Sea•Doo i-Control equipped models 2011-2017

Approximate Installation Time: .25 hrs.

Recommended Specialty Tools:

None required

Part #

N/A

Required Materials:

None required

Part #

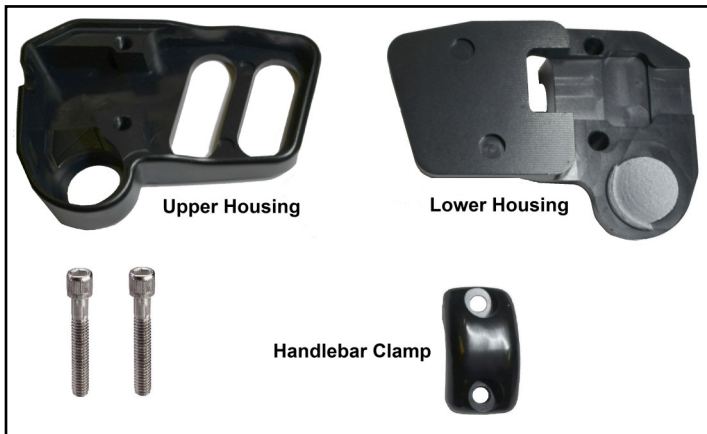
N/A

- INSTALLATION INSTRUCTIONS -

Follow the instructions in the appropriate Sea-Doo service manual or RIVA Steering System to remove the switch module and start/stop switch from the OEM LH. Control Switch Assembly. It is not necessary to unplug the switch module from the steering harness.

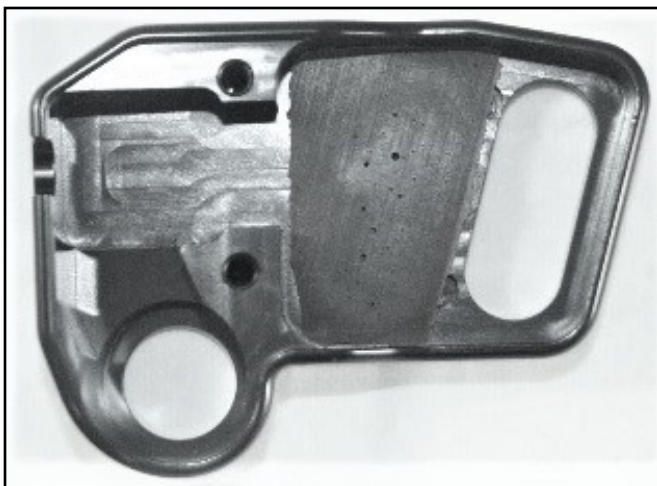
Remove the two screws in the bottom of the supplied switch housing and separate the handlebar clamp and the upper and lower halves of the housing. (Figure 1)

Figure 1.



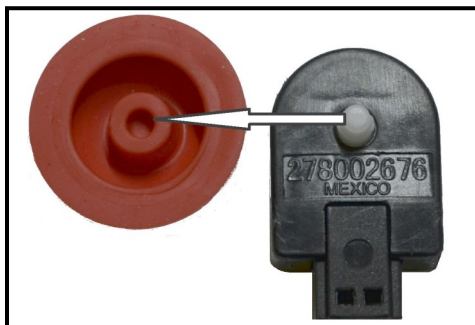
For models with VTS switch but no mode switch install RS2406013-BO block off into upper switch housing. (Figure 2)

Figure 2.



Place the red rubber cap on the start/stop switch. Make sure the white plunger on the start/stop switch is fitted into the center hole on the underside of the red rubber cap. (Figure 3)

Figure 3.



While holding the cap onto the start/stop switch insert the start/stop switch into the upper housing. Make sure the red rubber cap is aligned with the round hole in the upper housing and the wires fit into the cutout provided.

Insert the LH. switch module into the upper half of the housing. Make sure the switch is completely inserted into the upper housing, so that the control buttons protrude above the upper surface of the switch. (Figure 4)

Figure 4.



Note: Illustrations show the switches without the wiring for purposes of clarity. If you have disconnected the switches you must reconnect them to the harness before installation into the housing. They cannot be connected after the housing halves are closed.

Figure 5.



Reinstall the lower half of the switch housing and position the assembled housing on the handlebar. **Note:** Take care to insure that the wires are in the opening provided for them and do not get pinched between the upper and lower housing halves. Install the handlebar clamp and the two screws loosely into the housing.

Adjust the switch housing on the handlebar to suit your riding position and tighten the 2 screws.

- INSTALLATION INSTRUCTIONS -

Cut the supplied spiral wrap to the required length and wrap it around the exposed wires. (Figure 6)



Figure 6.

Note: Shown installed on RIVA 29”
Runabout bars with Brake Housing
RS2406011 and ODI grips not included
in this kit.

***Remember, the water belongs to everyone.
Please ride responsibly and respect the environment!***

Technical Support

For answers to questions regarding installation or trouble shooting RIVA Performance Products contact:
RIVA Technical Support directly at (954) 247-0705 or by e-mail at tech_support@rivamotorsports.com.

Limited Warranty

RIVA Billet housings carry a 90 day limited warranty to the original purchaser. They are warranted to be free of defects in materials and workmanship under normal use and service. Customer modified components will be void of warranty. This warranty is limited to defects in the primary components only. Finish and/or wear marks in or on primary components are not covered under this warranty.

RIVA Racing's liability is expressly limited to the repair or replacement of the components contained within or associated with this kit. RIVA Racing agrees to repair or at RIVA's option, replace any defective unit without charge, if product is returned to RIVA Racing freight prepaid within the warranty period. Any equipment returned which, in RIVA's opinion, has been subjected to misuse, abuse, overheating or accident shall not be covered by this warranty.

RIVA Racing shall have no liability for special, incidental or consequential damages or injury to persons or property from any cause arising from the sale, installation or use of this product.

No other warranty, express or implied, including, but not limited to the implied warranties of merchantability and fitness for a particular purpose, applies. Various states do not allow for the limitation of incidental or consequential damages and therefore the above exclusion or limitation may not apply to you.

Warranty does not include the expenses related to freight or transportation of parts or compensation for any inconvenience or loss of use while being repaired. A copy of the original invoice and a Return Authorization Number (RA#) must accompany all warranty claims.

Warranted replacement parts will be returned freight collect.