



Pump Seal Kit PART# - RY25070

APPLICATION(S): 2012 & Newer Yamaha FX Models (RIVA Top-Loader Intake Grate Only – Part# RY22070)

***** DISCONNECT BATTERY BEFORE PERFORMING INSTALLATION *****

- INSTALLATION INSTRUCTIONS -

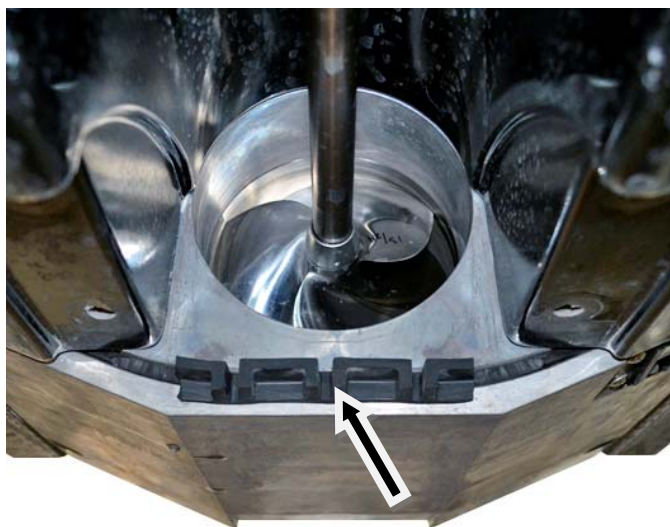
Remove lanyard.

Disconnect battery cables. **NOTE: Negative (black) first. Positive (red) second.**

Remove stock intake grate (6 bolts). **NOTE:** It may be necessary to apply heat to bolts to ease removal. Do so in small amounts.

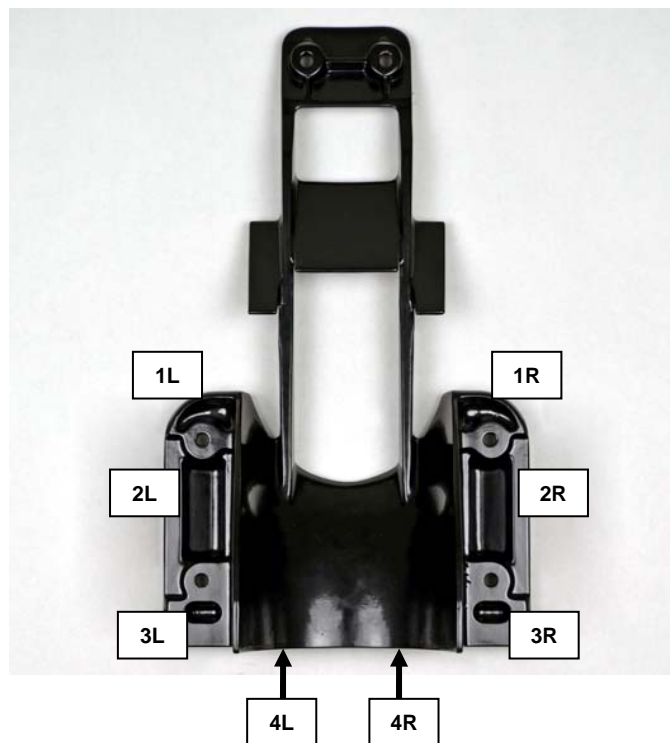
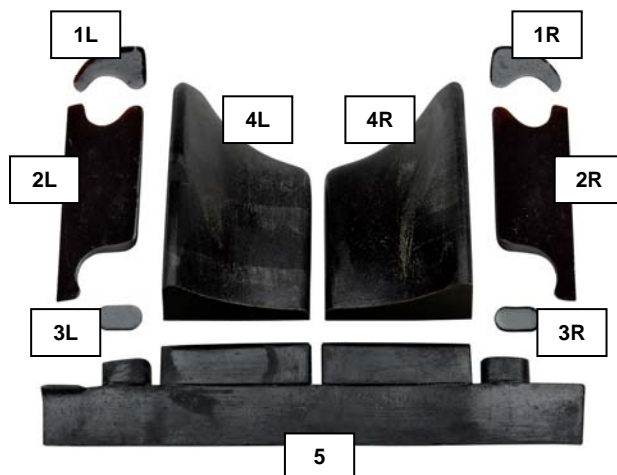
Loosen bolts (4) securing ride plate to hull.

Remove and discard stock rubber insert between ride plate and transom plate.

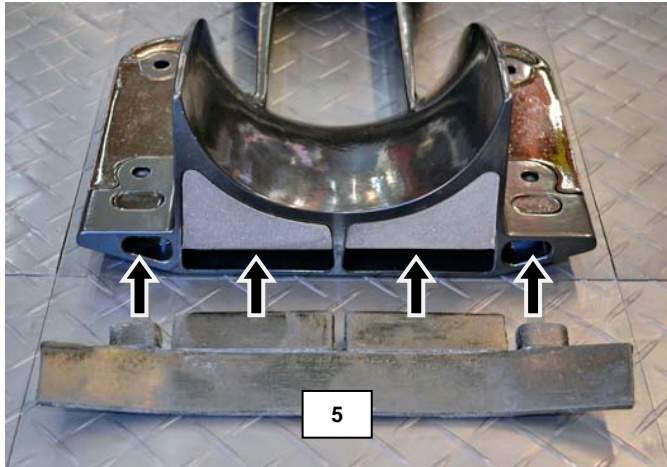


TIP: Loosen front bolts (2) as much as possible, but do not remove completely.

Install supplied Pump Seal Kit pieces into RIVA Top-Loader Intake Grate as shown below. **NOTE: See next page for installation of Pump Seal Kit piece #5.**

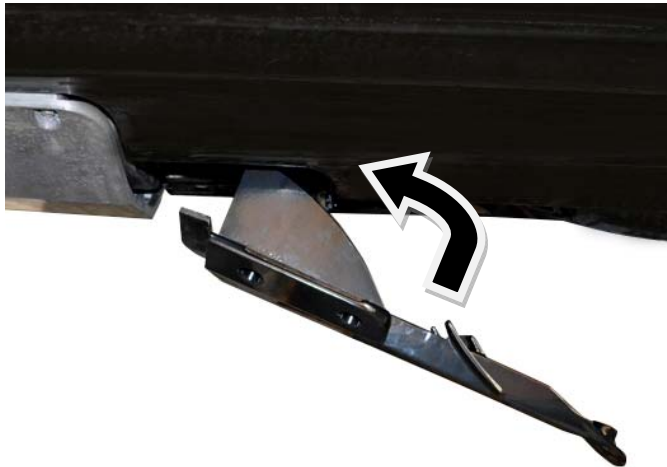


Insert Pump Seal Kit piece #5 into rear of RIVA Top-Loader Intake Grate.



Before installing intake grate permanently test fit to ensure intake grate seats properly in hull. Variances in materials (hull, transom plate, pump seal kit) may require the Pump Seal Kit be relieved to allow intake grate to be installed properly.

NOTE: Insert exposed flap of Pump Seal Kit between ride plate and transom plate first. Then raise front of intake grate into position against hull.



Remove intake grate. Apply generous amount of 'below waterline' silicone sealant to front of transom plate.



Apply generous amount of 'below waterline' silicone sealant to edges/sides of intake grate and front of intake grate.



See next page.

Apply generous amount of 'below waterline' silicone sealant to edges/sides of intake grate and front of intake grate.



Install intake grate and secure with stock bolts. **NOTE: Apply blue Loctite to bolts. Torque to 12.5 lbf•in / 17 N•m.**

Secure ride plate. **NOTE: Apply blue Loctite to bolts. Torque to 12.5 lbf•in / 17 N•m.**

Remove excess silicone leaving a smooth transition from hull to intake grate.

Allow silicone to dry for a minimum of 24 hours.

Reconnect battery. **NOTE: Positive (red) first. Negative (black) second.**

***Remember, the water belongs to everyone.
Please ride responsibly and respect the environment!***

Technical Support

For answers to questions regarding installation or trouble shooting RIVA Performance Products contact: RIVA Technical Support directly at (954) 247-0705 or by e-mail at tech_support@rivamotorsports.com