

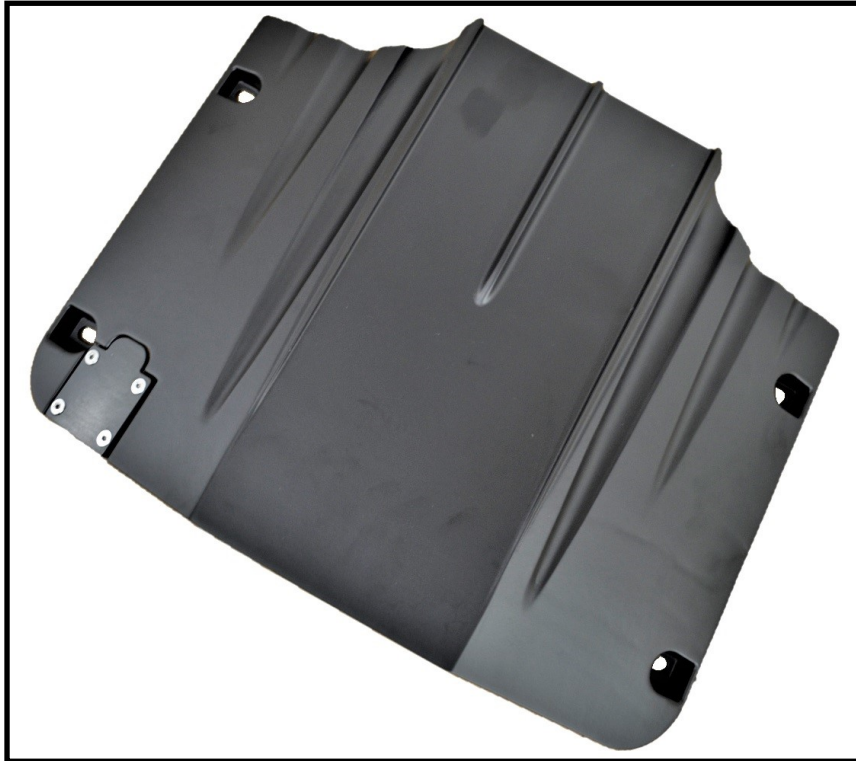


RIVA RACING

PERFORMANCE PRODUCTS & ACCESSORIES

GP1800/ VXR/ VXS Ride Plate

RY21160



Applications: GP1800 2017+, VXR/S 2015+

Approximate Installation Time: .5 hr

Recommended Specialty Tools:

N/A

Part #

N/A

Required Materials:

Blue Loctite

Part #

N/A

We strongly recommend the use of a service manual to familiarize yourself with the various components and procedures involved with this installation. Please note that some of the original hardware removed in the disassembly process will be used in the installation process. These instructions have been written in step-by-step format and refer to illustrations. Read through instructions entirely before performing installation. Please follow these step-by-step instructions and illustrations carefully.

***** ALLOW ENGINE TO COOL COMPLETELY BEFORE PERFORMING INSTALLATION *****

***** NO SMOKING *** NO SMOKING *** NO SMOKING *****

Installation

Figure 1

2015-20 Models: Remove screws (4) securing speedo sensor to OEM ride plate. (S, Figure 1) Retain screws for re-use.

Remove bolts (4) securing OEM ride plate to hull. (B, Figure 1) Retain bolts for re-use.

Remove OEM ride plate.

2015-20 Models: Remove screws (4) securing sensor block-off in supplied RIVA ride plate. (Figure 2) Remove sensor block off.

Install supplied ride plate and secure with OEM bolts (previously removed). **NOTE: Apply blue Loctite to bolts. Torque to 12.5 lb•f / 17 N•m.**

2015-20 Models: Install speedo sensor with OEM screws (previously removed).

NOTE: Apply blue Loctite to bolts. Torque to 3.0 lb•f / 4.0 N•m.

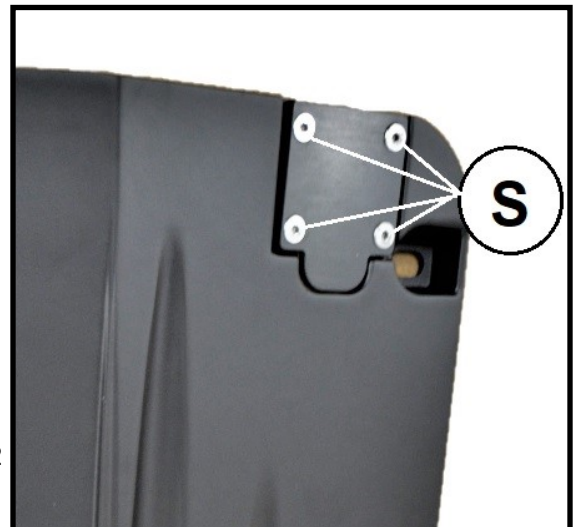
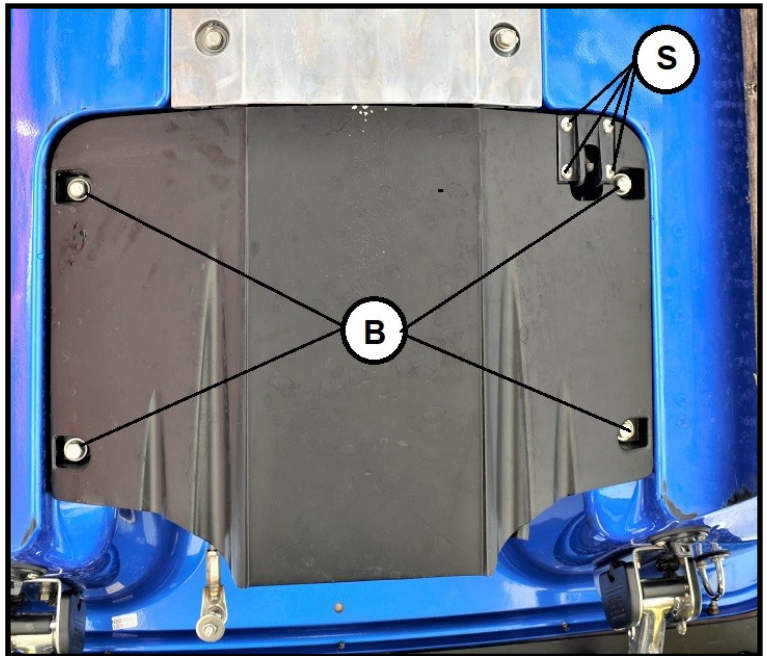


Figure 2

***Remember, the water belongs to everyone.
Please ride responsibly and respect the environment!***

Technical Support

For answers to questions regarding installation or trouble shooting RIVA Performance Products contact:

RIVA Technical Support directly at (954) 247-0705 or by e-mail at tech_support@rivaracing.com.

Limited Warranty

RIVA Ride Plates carry a 1 year limited warranty to the original purchaser. They are warranted to be free of defects in materials and workmanship under normal use and service. Customer modified components will be void of warranty. This warranty is limited to defects in the primary components only. Finish and/or wear marks in or on primary components are not covered under this warranty.

RIVA Racing's liability is expressly limited to the repair or replacement of the components contained within or associated with this kit. RIVA Racing agrees to repair or at RIVA's option, replace any defective unit without charge, if product is returned to RIVA Racing freight prepaid within the warranty period. Any equipment returned which, in RIVA's opinion, has been subjected to misuse, abuse, overheating or accident shall not be covered by this warranty.

RIVA Racing shall have no liability for special, incidental or consequential damages or injury to persons or property from any cause arising from the sale, installation or use of this product.

No other warranty, express or implied, including, but not limited to the implied warranties of merchantability and fitness for a particular purpose, applies. Various states do not allow for the limitation of incidental or consequential damages and therefore the above exclusion or limitation may not apply to you.

Warranty does not include the expenses related to freight or transportation of parts or compensation for any inconvenience or loss of use while being repaired. A copy of the original invoice and a Return Authorization Number (RA#) must accompany all warranty claims.

Warranted replacement parts will be returned freight collect.