



RIVA RACING

PERFORMANCE PRODUCTS & ACCESSORIES

Sea•Doo Pro-Series Sponson Kit

PART# - RS26050

APPLICATIONS: All 4-TEC Models

Required tools

Phillips head screw driver
1/4" drive ratchet
4" extension (1/4" drive)
10mm shallow socket (1/4" drive)
T-25 Star Hex Bit (1/4" drive)
Adjustable wrench or pliers
Razor blade
Blue Loc-Tite (medium strength)

Part#

N/A
N/A
N/A
N/A
RS35187 (10-pc set)
N/A
N/A
538066

- INSTALLATION INSTRUCTIONS -

2004 & Older models only:

1. Remove the three Phillips-head screws from underside of OEM sponson fin. (see illustration #1)
2. Remove sponson cover plate by prying at rear and lifting to expose the five studs and nuts securing OEM sponson to hull. (see illustration #2)
3. Remove the five OEM M10 nylock nuts and washers and discard. Remove OEM sponson fin and discard. (see illustration #3)
4. Carefully clean excess silicone around OEM studs by cutting away with a razor blade. **NOTE: Do not pull to remove!**
5. Note position of OEM studs. They may need to be turned slightly to accommodate RIVA Pro-Series Sponson Backing Plates. (see illustration #4)
6. Apply a thin layer of below waterline silicone to back of RIVA Sponson backing plates. Install backing plate onto hull. **NOTE: Backing plates fit one way only. Forward-most mounting point is lower than others.** Secure backing plate to hull using supplied hardware. **NOTE: Use blue Loc-tite. Do not over tighten nuts.** (see illustration #10)
7. Install RIVA Pro-Series Sponson Fins using supplied Phillips head screws and M6 wavy washers. **NOTE: Use blue Loc-tite. Do not over tighten screws.** (see illustration #11)

2005 & Newer:

1. Remove the five OEM M6 Torx screws and washers securing sponson to hull. Retain Torx screws. (see illustration #5)
2. Carefully clean excess silicone around OEM studs by cutting away with a razor blade. **NOTE: Do not pull to remove!**
3. Note position of OEM studs. They may need to be turned slightly to accommodate RIVA Pro-Series Sponson Backing Plates. (see illustration #6)
4. Apply a thin layer of below waterline silicone to back of RIVA Sponson backing plates. Install backing plate onto hull. **NOTE: Backing plates fit one way only. Forward-most mounting point is lower than others.** Secure backing plate to hull with OEM Torx screws and supplied flat washers. **NOTE: Use blue Loc-tite. Do not over tighten Torx screws.** (see illustration #10)
5. Install RIVA Pro-Series Sponson Fins using supplied Phillips head screws and M6 wavy washers. **NOTE: Use blue Loc-tite. Do not over tighten screws.** (see illustration #11)

2010 & Newer:

1. Open/Remove rear storage hatch covers. (iS/aS models only: Remove storage tubs.)

2. Remove the five OEM Torx screws securing sponsons to hull. Retain hardware. (see illustration #5)
3. Carefully remove alignment inserts from back of stock sponsons. (see illustration #7) **NOTE: One or more may be stuck to hull!**
4. Carefully remove excess silicone from hull.
5. Insert stock alignment inserts into openings on back of RIVA Sponson backing plates. (see illustration #8&9)
6. Apply a thin layer of below waterline silicone to back of RIVA Sponson backing plates. Install backing plate onto hull. **NOTE: Backing plates fit one way only. Forward-most mounting point is lower than others.** Secure backing plate to hull with OEM Torx screws and supplied flat washers on outside, OEM nuts and washers on inside. **NOTE: Do not over tighten Torx screws.** (see illustration #10)
7. Install RIVA Pro-Series Sponson Fins using supplied Phillips head screws and M6 wavy washers. **NOTE: Use blue Loc-tite. Do not over tighten screws.** (see illustration #11)

NOTE: For the purpose of these instructions the sponson fins were installed in the lower-most position to provide the most influence thus improving handling. Be sure to reapply Loc-tite each time you adjust sponson blades.

Remember, the water belongs to everyone. Please ride responsibly!

Technical Support

For answers to questions regarding installation or trouble shooting RIVA Performance Products contact:
RIVA Technical Support directly at (954) 247-0705 or by e-mail at tech_support@rivamotorsports.com

30-day Limited Warranty

RIVA Pro-Series Sponson Kits carry a 30-day limited warranty to the original purchaser. They are warranted to be free of defects in materials and workmanship under normal use and service. Customer modified components will be void of warranty. This warranty is limited to defects in the primary components only. Finish and/or wear marks in or on primary components are not covered under this warranty.

RIVA Racing's liability is expressly limited to the repair or replacement of the components contained within or associated with this kit. RIVA Racing agrees to repair or at RIVA's option, replace any defective unit without charge, if product is returned to RIVA Racing freight prepaid within the warranty period. Any equipment returned which, in RIVA's opinion, has been subjected to misuse, abuse, overheating or accident shall not be covered by this warranty.

RIVA Racing shall have no liability for special, incidental or consequential damages or injury to persons or property from any cause arising from the sale, installation or use of this product.

No other warranty, express or implied, including, but not limited to the implied warranties of merchantability and fitness for a particular purpose, applies. Various states do not allow for the limitation of incidental or consequential damages and therefore the above exclusion or limitation may not apply to you.

Warranty does not include the expenses related to freight or transportation of parts or compensation for any inconvenience or loss of use while being repaired. A copy of the original invoice must accompany all warranty claims.

Warranted replacement parts will be returned freight collect.

Sea•Doo Pro-Series Sponson Kit

PART# - RS26050

INSTALLATION IMAGES

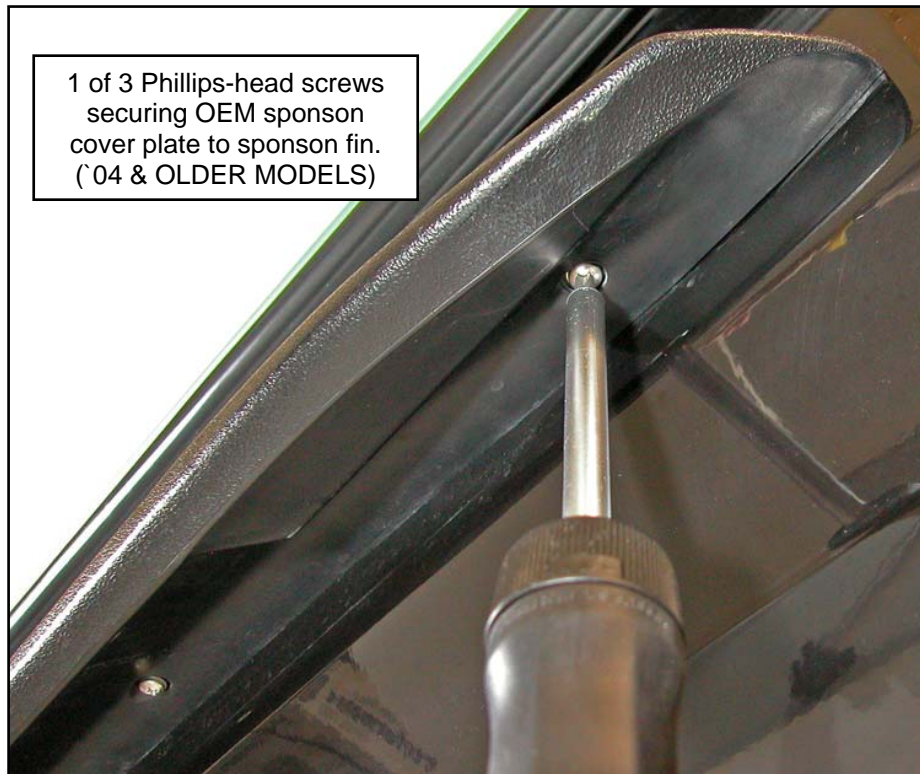


ILLUSTRATION #1



ILLUSTRATION #2



ILLUSTRATION #3

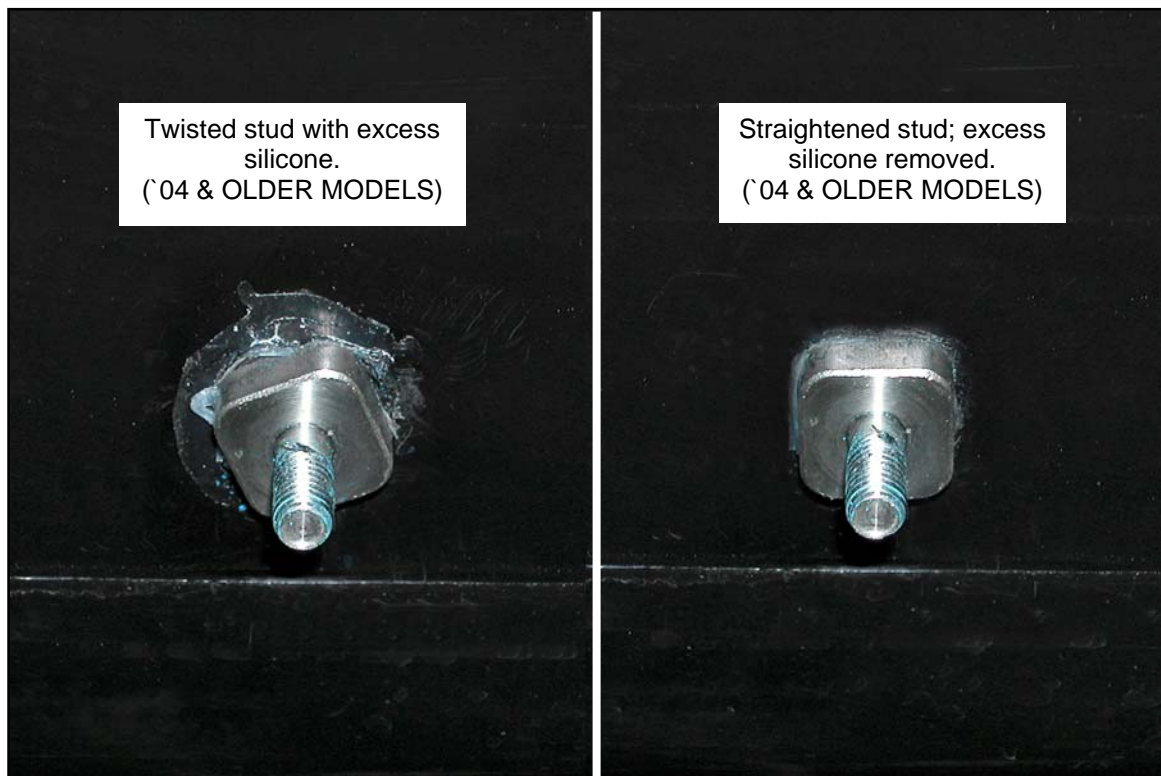


ILLUSTRATION #4



ILLUSTRATION #5

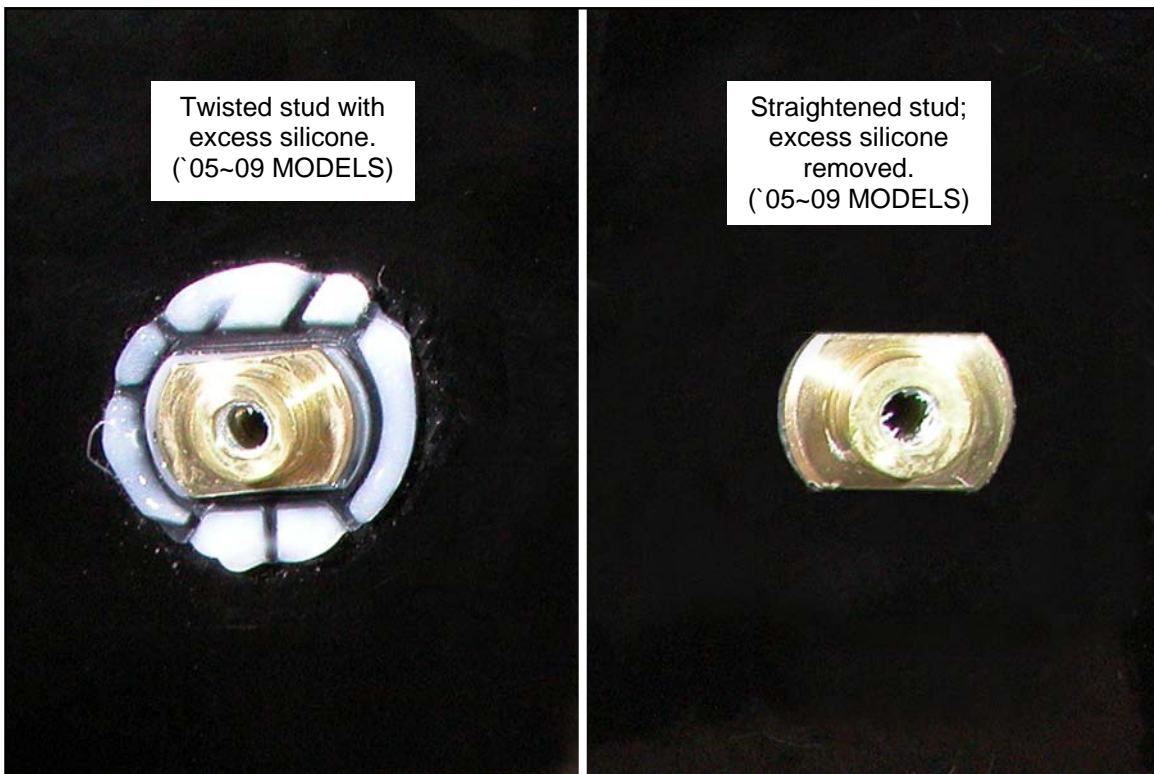


ILLUSTRATION #6

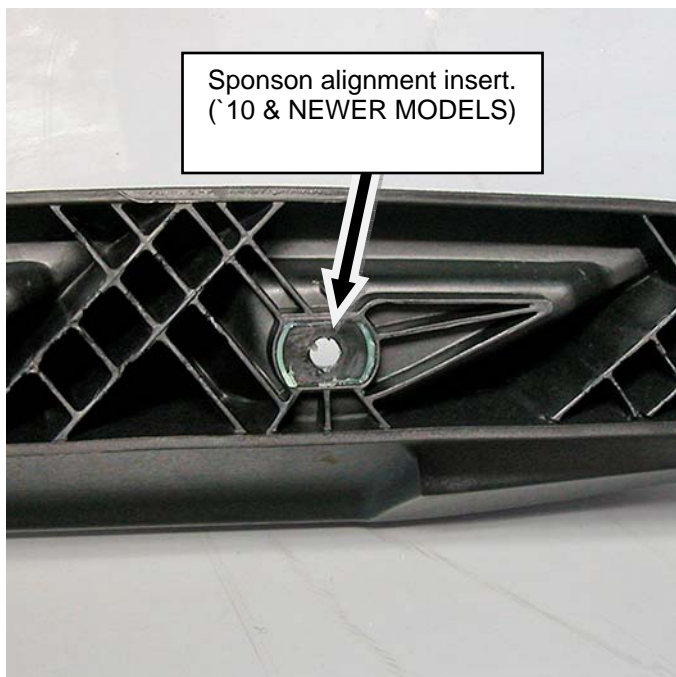


Illustration #7



Illustration #8

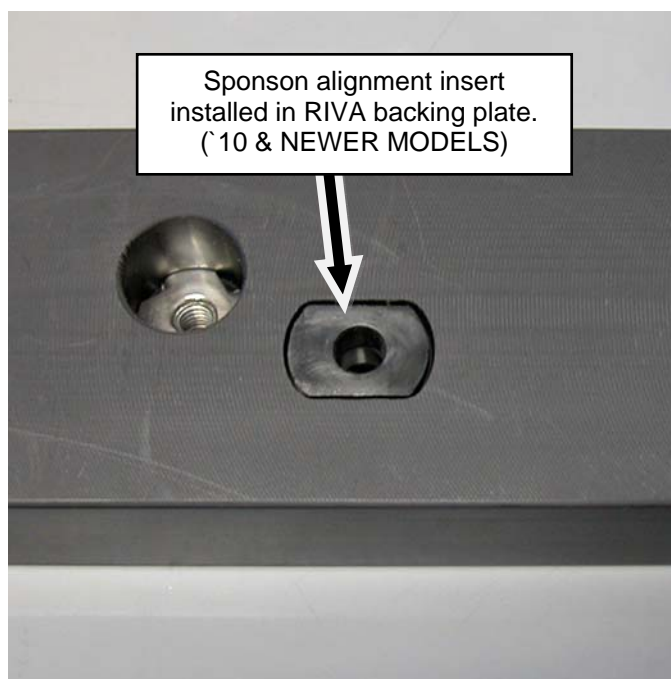


Illustration #9

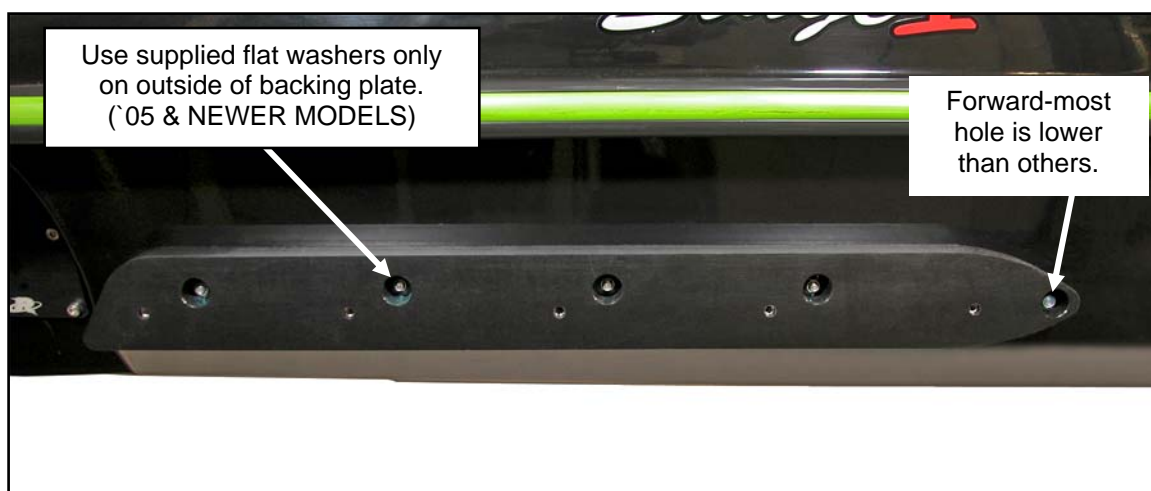


ILLUSTRATION #10



ILLUSTRATION #11