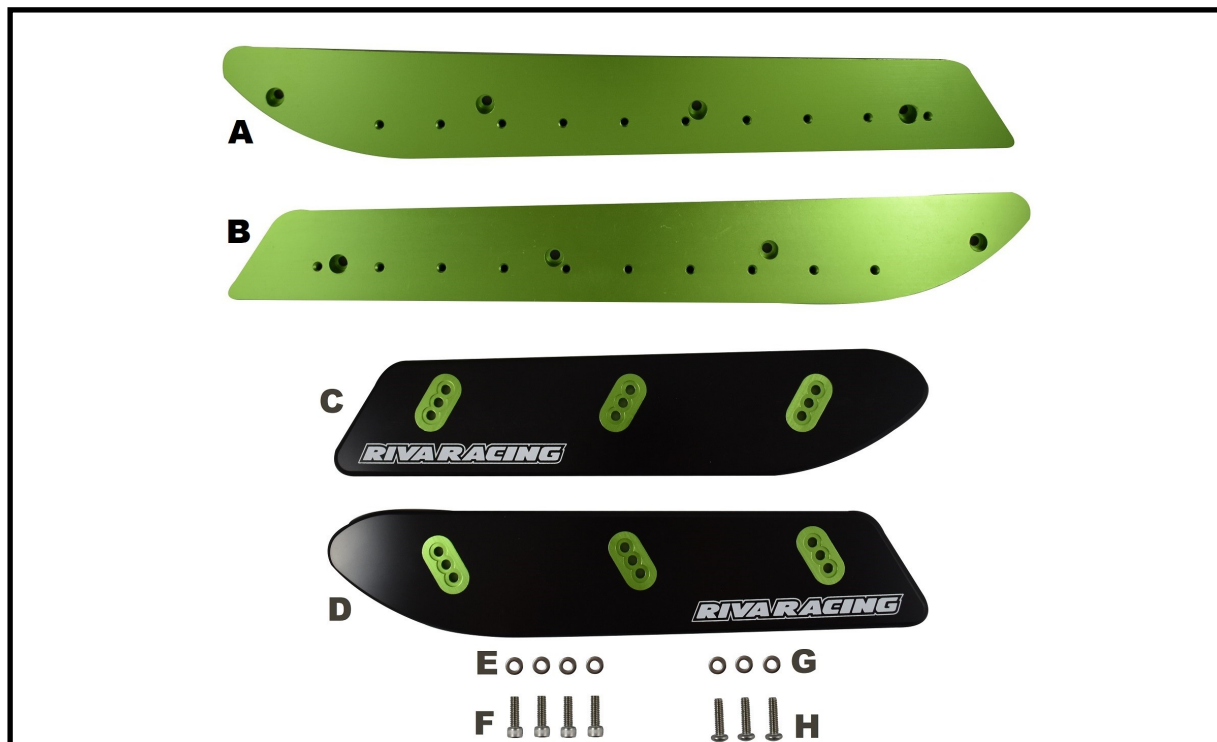




**RIVA RACING**  
PERFORMANCE PRODUCTS & ACCESSORIES

## SX-R1500 Pro-Series Sponsons

RK26110



**Applications:** Kawasaki SX-R 1500 2017-

**Approximate Installation Time:** .5 hr

**Recommended Specialty Tools:**

**Part #**

N/A

**Required Materials:**

**Part #**

Blue Loctite

N/A

We strongly recommend the use of a service manual to familiarize yourself with the various components and procedures involved with this installation. Please note that some of the original hardware removed in the disassembly process will be used in the installation process. These instructions have been written in step-by-step format and refer to illustrations. Read through instructions entirely before performing installation. Please follow these step-by-step instructions and illustrations carefully.

**\*\*\* ALLOW ENGINE TO COOL COMPLETELY BEFORE PERFORMING INSTALLATION \*\*\***

**\*\*\* NO SMOKING \*\*\* NO SMOKING \*\*\* NO SMOKING \*\*\***



**RIVA RACING**  
PERFORMANCE PRODUCTS & ACCESSORIES

**Product name**

**COMPONENT LIST**

		QUANTITY	PART NUMBER	DESCRIPTION
A	<input type="checkbox"/>	1		LH Backing Plate
B	<input type="checkbox"/>	1		RH Backing Plate
C	<input type="checkbox"/>	1		RH Sponson Fin with inserts
D	<input type="checkbox"/>	1		LH Sponson Fin with inserts
E	<input type="checkbox"/>	4	369021SS	6 mm Flat Washer
F	<input type="checkbox"/>	4	0094620	6x20 mm SHCS
G	<input type="checkbox"/>	3	435.060	6 mm Wave Washer
H	<input type="checkbox"/>	3	773780SS	SS.Phillips Head Screw

Packed with pride by: \_\_\_\_\_

Your kit was inspected and verified before being carefully packaged by our staff. Please check package contents before beginning assembly. If you have a question about missing or damaged items please contact RIVA Technical Support directly at (954) 247-0705 or by e-mail at [tech\\_support@rivamotorsports.com](mailto:tech_support@rivamotorsports.com)

## - INSTALLATION INSTRUCTIONS -

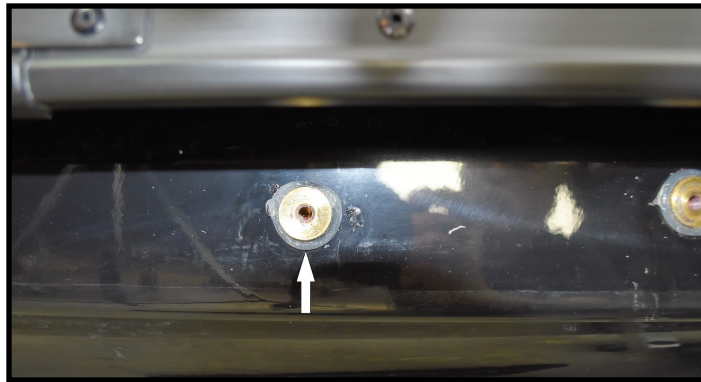
Remove bolts (4) securing RH. OEM sponson to hull. Discard OEM sponson and bolts. (Figure 1)

Figure 1



Remove excess silicone sealer around thread inserts. **Note: use caution not to scratch gelcoat.** (Figure 2)

Figure 2



Install supplied RH Backing Plate using supplied 6x20mm socket head cap screws and 6mm flat washers. **Note: Apply blue Loctite to bolt threads. Do not use sealer on backing plate.** (Figure 3)

Figure 3



Install supplied RH Sponson Fin using supplied 6mm Phillips Head Screws and Wave Washers.

**Note: apply blue Loctite to screw threads.** (Figure 4)

Figure 4



Repeat removal and installation process for LH sponson.

### Fin Position



Sponson Fin In Full Back Full Up Position



Sponson Fin In Full Forward Full Down Position

RIVA SX-R 1500 Sponsons are highly adjustable for different riding conditions and rider preferences.

The fins can be adjusted up and down to three different positions, and front to back in 4 locations.

RIVA recommends starting with the fin in the full back full up position and working from there to find the position that best suits your riding style and conditions.

In general moving the fin down will make the sponson dig in more in turns and up will allow the rear of the ski to slip more in turns. Moving the fin rearward makes larger radius turns and forward makes smaller radius turns.

***Remember, the water belongs to everyone.  
Please ride responsibly and respect the environment!***

**Technical Support**

For answers to questions regarding installation or trouble shooting RIVA Performance Products contact:

RIVA Technical Support directly at (954) 247-0705 or by e-mail at [tech\\_support@rivamotorsports.com](mailto:tech_support@rivamotorsports.com).

**Limited Warranty**

RIVA Pro-Series Sponsons carry a 30 day limited warranty to the original purchaser. They are warranted to be free of defects in materials and workmanship under normal use and service. Customer modified components will be void of warranty. This warranty is limited to defects in the primary components only. Finish and/or wear marks in or on primary components are not covered under this warranty.

RIVA Racing's liability is expressly limited to the repair or replacement of the components contained within or associated with this kit. RIVA Racing agrees to repair or at RIVA's option, replace any defective unit without charge, if product is returned to RIVA Racing freight prepaid within the warranty period. Any equipment returned which, in RIVA's opinion, has been subjected to misuse, abuse, overheating or accident shall not be covered by this warranty.

RIVA Racing shall have no liability for special, incidental or consequential damages or injury to persons or property from any cause arising from the sale, installation or use of this product.

No other warranty, express or implied, including, but not limited to the implied warranties of merchantability and fitness for a particular purpose, applies. Various states do not allow for the limitation of incidental or consequential damages and therefore the above exclusion or limitation may not apply to you.

Warranty does not include the expenses related to freight or transportation of parts or compensation for any inconvenience or loss of use while being repaired. A copy of the original invoice and a Return Authorization Number (RA#) must accompany all warranty claims.

Warranted replacement parts will be returned freight collect.

**This area intentionally left blank**