



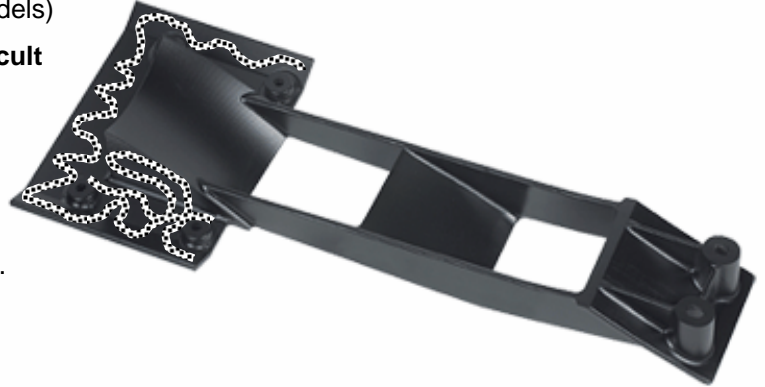
RIVA RACING
PERFORMANCE PRODUCTS & ACCESSORIES

Top-Loader Intake Grate

PART# - RK22090

APPLICATION(S): `07 & Newer Kawasaki Ultra (all models)

1. Remove stock intake grate. **NOTE: If bolts are difficult to remove apply heat.**
2. Clean hull and supplied intake grate with a non-residual cleaner.
3. Apply 'below waterline' silicone sealant to rear of intake grate. (see illustration at right)
4. Install intake grate and secure using stock hardware. **NOTE: Apply blue Loc-tite to bolts. Torque to 9.8 N•m (87 in•lbs).**



Technical Support

For answers to questions regarding installation or trouble shooting RIVA Performance Products contact:
RIVA Technical Support directly at (954) 247-0705 or by e-mail at tech_support@rivamotorsports.com.



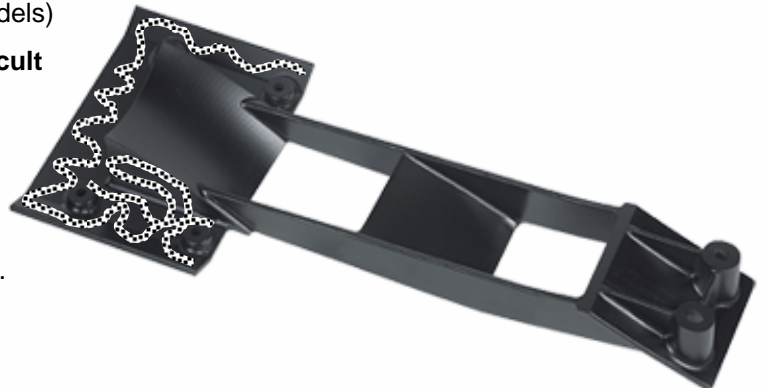
RIVA RACING
PERFORMANCE PRODUCTS & ACCESSORIES

Top-Loader Intake Grate

PART# - RK22090

APPLICATION(S): `07 & Newer Kawasaki Ultra (all models)

5. Remove stock intake grate. **NOTE: If bolts are difficult to remove apply heat.**
6. Clean hull and supplied intake grate with a non-residual cleaner.
7. Apply 'below waterline' silicone sealant to rear of intake grate. (see illustration at right)
8. Install intake grate and secure using stock hardware. **NOTE: Apply blue Loc-tite to bolts. Torque to 9.8 N•m (87 in•lbs).**



Technical Support

For answers to questions regarding installation or trouble shooting RIVA Performance Products contact:
RIVA Technical Support directly at (954) 247-0705 or by e-mail at tech_support@rivamotorsports.com