



**RIVA RACING**  
PERFORMANCE PRODUCTS & ACCESSORIES

## **RIVA Yamaha SVHO 65 mm Throttle Body**

*RY17040-TB-65MM*



**Applications:** Yamaha 1.8L SVHO models 2014-

**Approximate Installation Time:** 1.0 hr (does not include removal and replacement on engine)

**Recommended Specialty Tools:**

T-20 security TORX bit  
die grinder and porting bits

**Required Materials:**

Blue Loctite

**Engine Management:**

This part requires use of remapped OEM ECU or stand-alone ECU with correct calibration. Riva Racing offers specific MaptunerX and ViPEC V88R3 maps for use with this throttle body.

We strongly recommend the use of a service manual to familiarize yourself with the various components and procedures involved with this installation. Please note that some of the original hardware removed in the disassembly process will be used in the installation process. These instructions have been written in step-by-step format and refer to illustrations. Read through instructions entirely before performing installation. Please follow these step-by-step instructions and illustrations carefully.

**\*\*\* ALLOW ENGINE TO COOL COMPLETELY BEFORE PERFORMING INSTALLATION \*\*\***

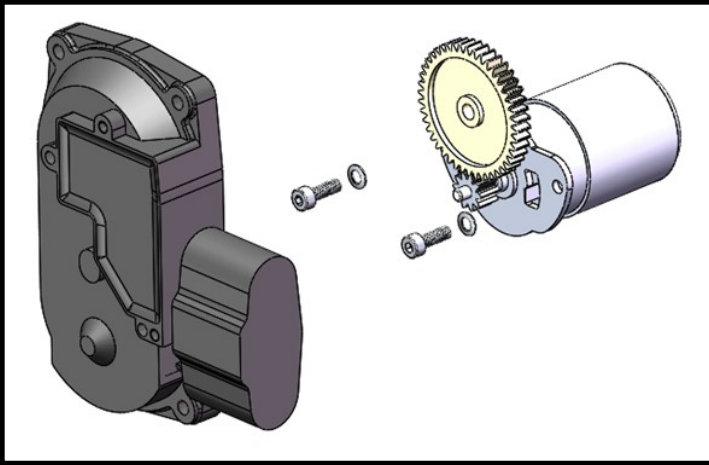
**\*\*\* NO SMOKING \*\*\* NO SMOKING \*\*\* NO SMOKING \*\*\***

## - INSTALLATION INSTRUCTIONS -

Following the instructions in the appropriate OEM service manual remove the OEM throttle body and intake manifold from the ski. Remove OEM throttle body, throttle damper assy, and flame arrestor from the manifold.

Using the recommended security torx bit remove the 4 screws from the throttle body cover. Remove the cover and the two screws retaining the throttle stepper motor. Remove the reduction gear and motor from the OEM throttle body. (Figure 1)

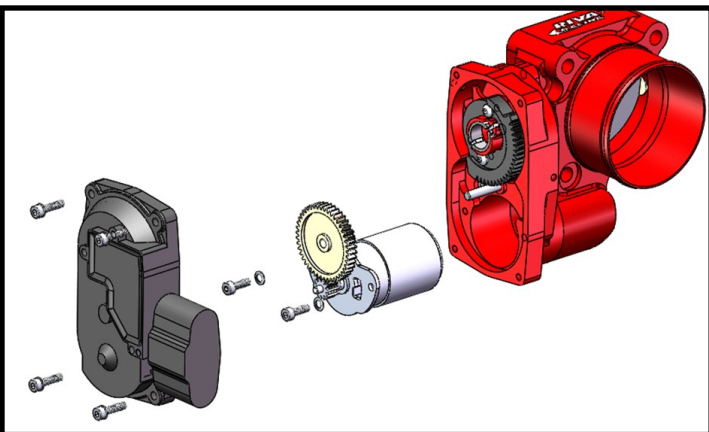
Figure 1



Insert OEM stepper motor into supplied throttle body and secure with (2) supplied 4x12mm screws and lock washers. (Do not tighten.) **Use blue loctite on screw threads.** Insert reduction gear and ensure good engagement of gear teeth. Tighten motor screws.

Install OEM motor cover using (4) supplied 4 x 12mm screws and lock washers. **Use blue loctite on screw threads.** (Figure 2)

Figure 2



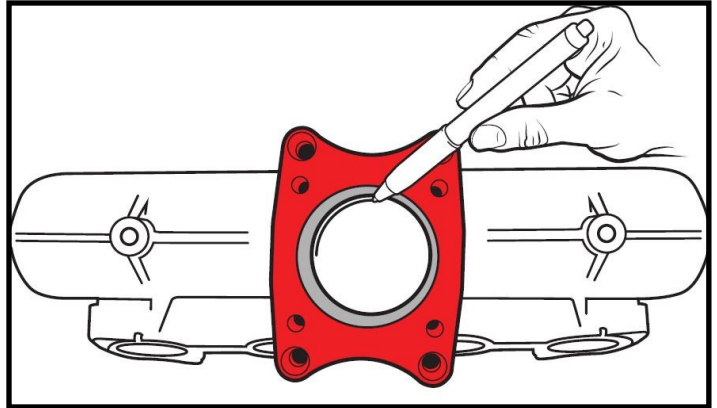
Remove o-ring from supplied throttle body adaptor and insert adaptor into manifold.

With adaptor fully inserted into manifold scribe a line around the ID of the intake manifold where it protrudes

beyond the adaptor diameter.

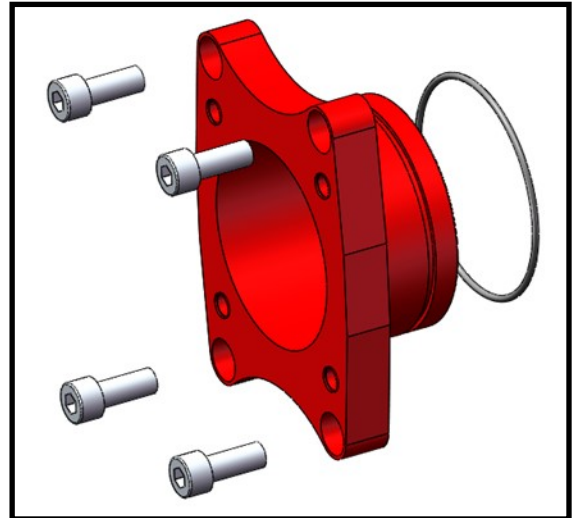
Remove adaptor and using a porting tool remove material from the ID of the intake manifold out to the line previously marked. Blend into ID of intake manifold. (Figure 3)

Figure 3



Re-install o-ring onto throttle adaptor and lubricate with glass cleaner. Insert adaptor into manifold and secure with (4) supplied 8 x 20mm screws. **Use blue loctite on screw threads.** Torque to 10 lb.ft. (13-14NM). (Figure 4)

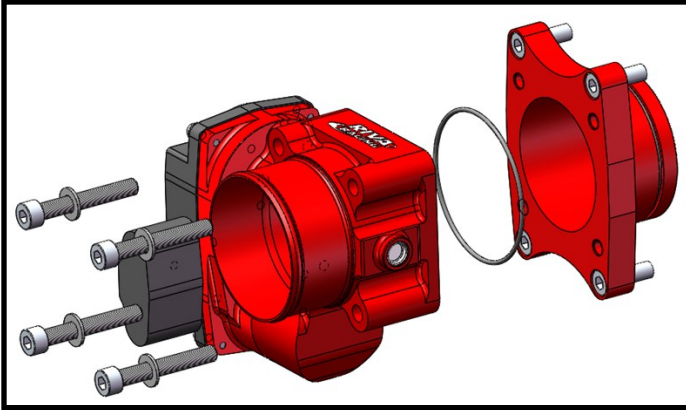
Figure 4



Place supplied o-ring into groove in supplied throttle body. Attach throttle body to adaptor with (4) supplied 8 x 55mm screws and washers. **Use blue loctite on screw threads.** Torque screws to 10 lb.ft (13-14NM). (Figure 5)

## **- INSTALLATION INSTRUCTIONS -**

**Figure 5**



Following instructions in appropriate OEM Service manual reinstall throttle body / manifold assembly onto engine.

### **Engine Management:**

This part requires use of remapped OEM ECU or stand-alone ECU with correct calibration. Riva Racing offers specific MaptunerX and Vipec maps for use with this throttle body.

Check bilge for tools, rags, etc. Run craft on a flush kit to check for proper operation.

***Remember, the water belongs to everyone.  
Please ride responsibly and respect the environment!***

### **Technical Support**

For answers to questions regarding installation or trouble shooting RIVA Performance Products contact:

RIVA Technical Support directly at (954) 247-0705 or by e-mail at [tech\\_support@rivamotorsports.com](mailto:tech_support@rivamotorsports.com).

### **Limited Warranty**

RIVA throttle bodies carry a 6 month limited warranty to the original purchaser. They are warranted to be free of defects in materials and workmanship under normal use and service. Customer modified components will be void of warranty. This warranty is limited to defects in the primary components only. Finish and/or wear marks in or on primary components are not covered under this warranty. This warranty does not apply to parts removed from the OEM throttle body for use in this throttle body.

RIVA Racing's liability is expressly limited to the repair or replacement of the components contained within or associated with this kit. RIVA Racing agrees to repair or at RIVA's option, replace any defective unit without charge, if product is returned to RIVA Racing freight prepaid within the warranty period. Any equipment returned which, in RIVA's opinion, has been subjected to misuse, abuse, overheating or accident shall not be covered by this warranty. Corrosion damage is abuse and shall not be covered by this warranty.

RIVA Racing shall have no liability for special, incidental or consequential damages or injury to persons or property from any cause arising from the sale, installation or use of this product.

No other warranty, express or implied, including, but not limited to the implied warranties of merchantability and fitness for a particular purpose, applies. Various states do not allow for the limitation of incidental or consequential damages and therefore the above exclusion or limitation may not apply to you.

Warranty does not include the expenses related to freight or transportation of parts or compensation for any inconvenience or loss of use while being repaired. A copy of the original invoice and a Return Authorization Number (RA#) must accompany all warranty claims.

Warranted replacement parts will be returned freight collect.