



**RIVA RACING**  
PERFORMANCE PRODUCTS & ACCESSORIES

**Sea•Doo 4-TEC SC Power Filter Kit**

**PART# - RS13050-03**

**INSTALLATION INSTRUCTIONS**

**APPLICATION:** `03GTX 4-TEC Supercharged

**\*\*\* NOTE: Allow craft's engine to cool thoroughly before performing installation. \*\*\***

1. Remove D.E.S.S. lanyard and disconnect battery cables.
2. Inside front storage compartment, remove thru-hull inspection cover by carefully removing the eleven snap fasteners. (see illustration #1).
3. Disconnect regulator/rectifier from wiring harness and remove from inlet end of OE intake ducting.
4. Unclip engine coolant overflow tank, remove from engine compartment cross-section and lay on top of engine. Take care not to tip overflow tank allowing coolant to drain.
5. Completely loosen the four M8 bolts holding engine compartment cross section in place. Remove both top and bottom halves of engine compartment cross-section supports. Leave air intake duct attached to bottom half. (see illustration's #4 & #5)
6. Remove OE intake ducting from supercharger forward as well as the secondary sound baffle connected to water box on left side of hull and discard. See illustration 4 for removal reference.
7. At the PTO, loosen hose clamp securing drive shaft boot (bellow) to thru-hull fitting, rotate 90-degrees and tighten. (see illustration #5) **NOTE: Do not over tighten hose clamp.**
8. Install supplied blue silicone coupler onto end of Power Filter Tube with RIVA Racing logo. Place two OE hose clamps over coupler, leaving loose. **TIP:** Use glass cleaner to ease installation of coupler!
9. From rear of engine compartment, carefully insert straight end of Power Filter Tube into engine compartment and route along right side of engine. (see illustration #6) **NOTE:** It may be necessary to remove forward most exhaust hose from right water box.
10. Install bracket 'A' onto oil separator (front of engine). (see illustration #7) **NOTE: Use BLUE Loc-Tite. Do not over tighten bolts. NOTE:** For `04~05 models you will need special star sockets for this step. These can be purchased through RIVA Racing's parts department. Order part# RS09531.
11. Align coupler end of Power Tube with supercharger inlet and slide silicone coupler onto supercharger completely. Secure coupler to supercharger with OE hose clamp. (see illustration #8)
12. Attach Power Filter Tube to bracket 'A' at front of motor using the two supplied M5 bolts and washers. (see illustration #7) **NOTE: Use BLUE Loc-Tite. Do not over tighten bolts.**
13. Attach OE cooling system vent hose to flange at underside of Power Filter Tube inlet. (see illustration #9)
14. At supercharger, ensure Power Filter Tube is inserted completely into silicone coupler and tighten remaining hose clamp. **NOTE: Do not over tighten hose clamps.**
15. Install supplied pre-filter onto supplied Power Filter element. Install Power Filter onto Power Filter Tube inlet and secure. (see illustration #10) **NOTE: Do not over tighten hose clamp.**
16. Mount regulator/rectifier onto supplied bracket 'B' using supplied M6 bolts, washers and nuts.

17. Install regulator/rectifier bracket onto backside of front storage compartment thru-hull inspection cover with supplied M8 bolt, washers and nut. (see illustration #11). **NOTE: Bolt hole location is critical. Refer to illustration #? for placement of regulator/rectifier.** Connect regulator/rectifier to OE wiring harness and carefully replace front storage compartment thru-hull inspection cover.
18. Install supplied water box block-off at open outlet on left water box using OE connecting coupler and hose clamps removed in Step 5. (see illustration #12) ***NOTE: Do not over tighten hose clamps.***
19. Replace bottom half of engine compartment cross-section support with air intake duct attached. This piece mounts under edge of engine compartment flange. Replace top half of engine compartment cross-section and tighten the four M8 bolts. ***NOTE: Do not over tighten bolts.***
20. Install engine coolant overflow tank into rear of engine compartment cross section. Take care not to tip overflow tank allowing coolant to drain.
21. Installation is now complete. Thoroughly inspect engine compartment and bilge for tools, rags, parts, etc. Reconnect battery cables and run craft out of water briefly using flush kit to check for leaks. Check hose clamps for snugness after running.

**NOTE: Sea•Doo and RIVA both strongly recommend the use of premium octane (92+) pump fuel.**

***Remember, the water belongs to everyone. Please ride responsibly!***

### **Technical Support**

For answers to questions regarding installation or trouble shooting RIVA Performance Products contact:  
RIVA Technical Support directly at (954) 247-0705 or by e-mail at [tech\\_support@rivamotorsports.com](mailto:tech_support@rivamotorsports.com)

### **1-Year Limited Warranty**

RIVA Power Filter Kits carry a one-year limited warranty to the original purchaser. They are warranted to be free of defects in materials and workmanship under normal use and service. Customer modified components will be void of warranty. This warranty is limited to defects in the primary components only. Finish and/or wear marks in or on primary components are not covered under this warranty.

RIVA Racing's liability is expressly limited to the repair or replacement of the components contained within or associated with this kit. RIVA Racing agrees to repair or at RIVA's option, replace any defective unit without charge, if product is returned to RIVA Racing freight prepaid within the warranty period. Any equipment returned which, in RIVA's opinion, has been subjected to misuse, abuse, overheating or accident shall not be covered by this warranty.

RIVA Racing shall have no liability for special, incidental or consequential damages or injury to persons or property from any cause arising from the sale, installation or use of this product.

No other warranty, express or implied, including, but not limited to the implied warranties of merchantability and fitness for a particular purpose, applies. Various states do not allow for the limitation of incidental or consequential damages and therefore the above exclusion or limitation may not apply to you.

Warranty does not include the expenses related to freight or transportation of parts or compensation for any inconvenience or loss of use while being repaired. A copy of the original invoice must accompany all warranty claims.

Warranted replacement parts will be returned freight collect.

**Sea•Doo Power Filter Kit**  
**PART# - RS13050-03**  
**INSTALLATION IMAGES**

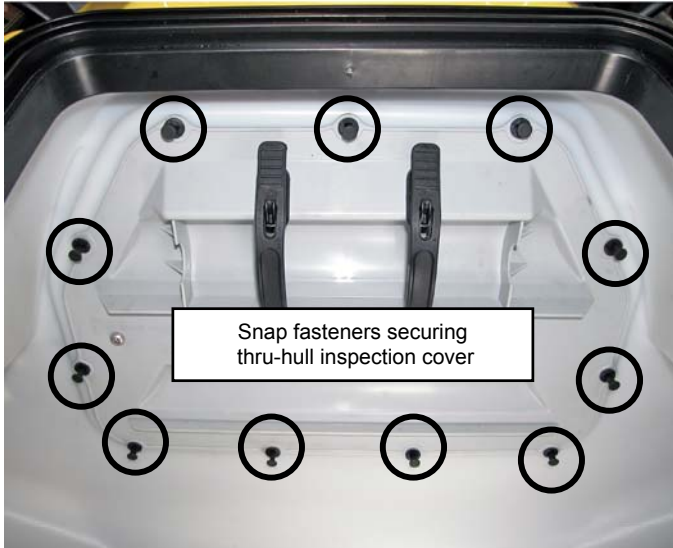


Illustration 1

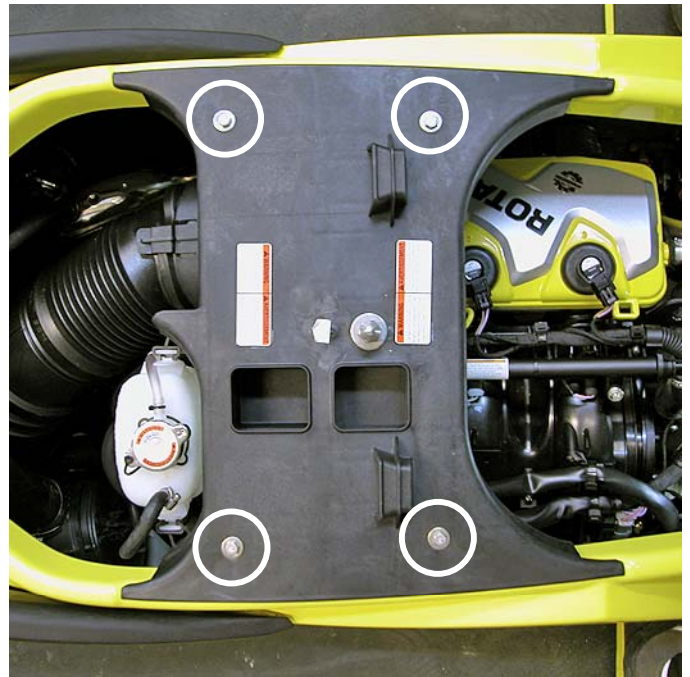


Illustration 2

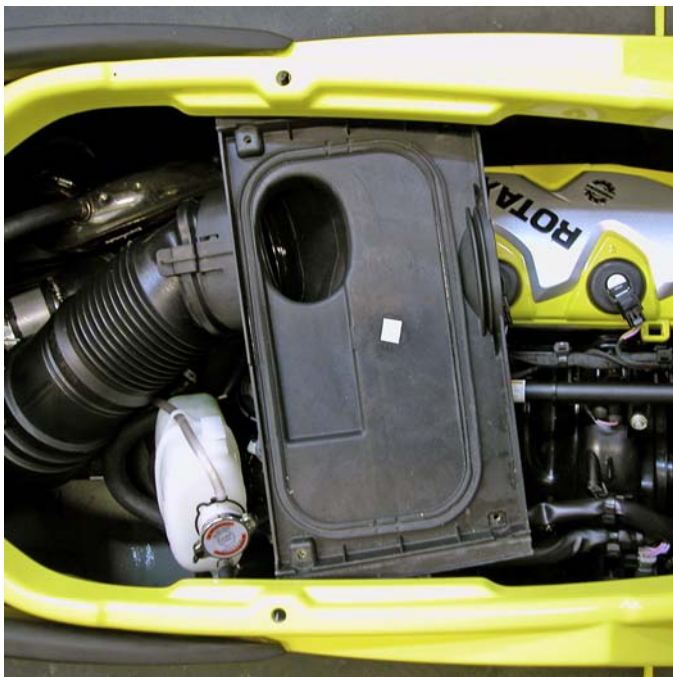


Illustration 3

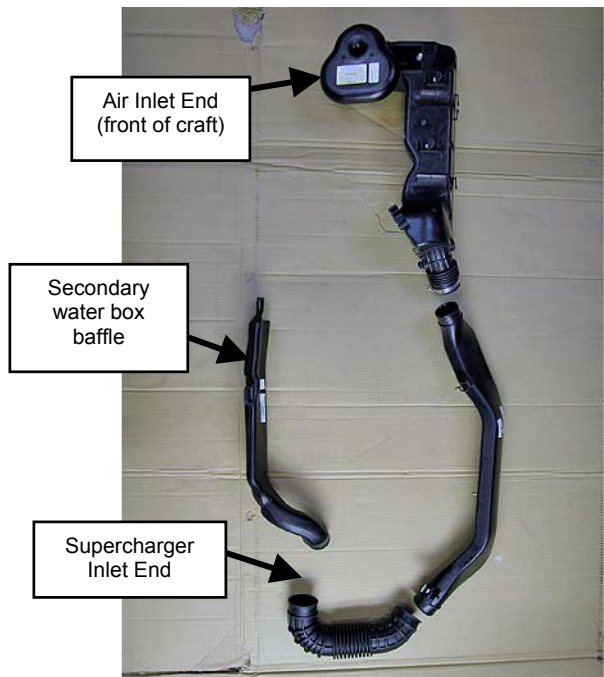


Illustration 4



## Sea•Doo Power Filter Kit

*PART# - RS13050-03*

### INSTALLATION IMAGES (cont.)



Illustration 5

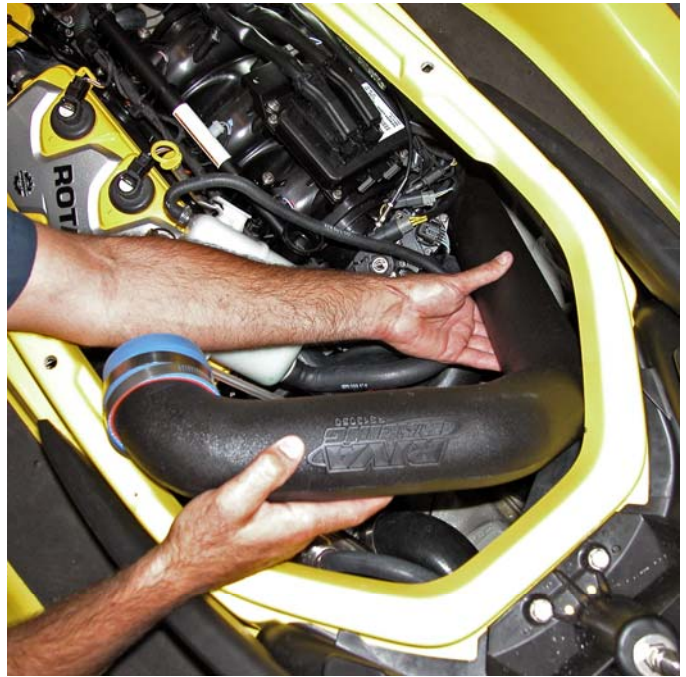


Illustration 6

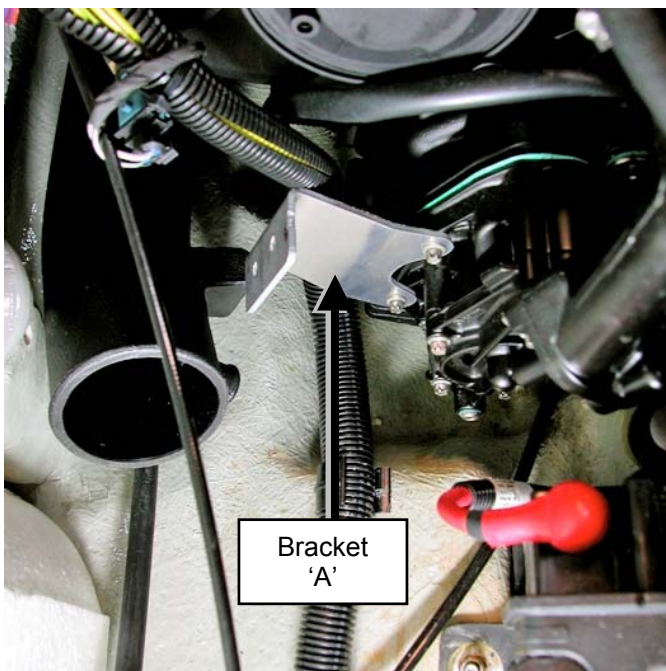


Illustration 7

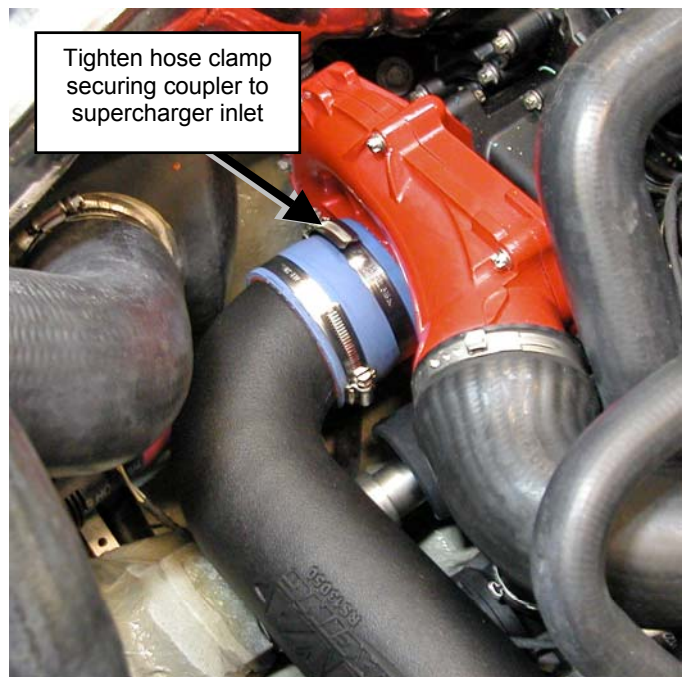


Illustration 8



## Sea•Doo Power Filter Kit

*PART# - RS13050-03*

### INSTALLATION IMAGES (cont.)

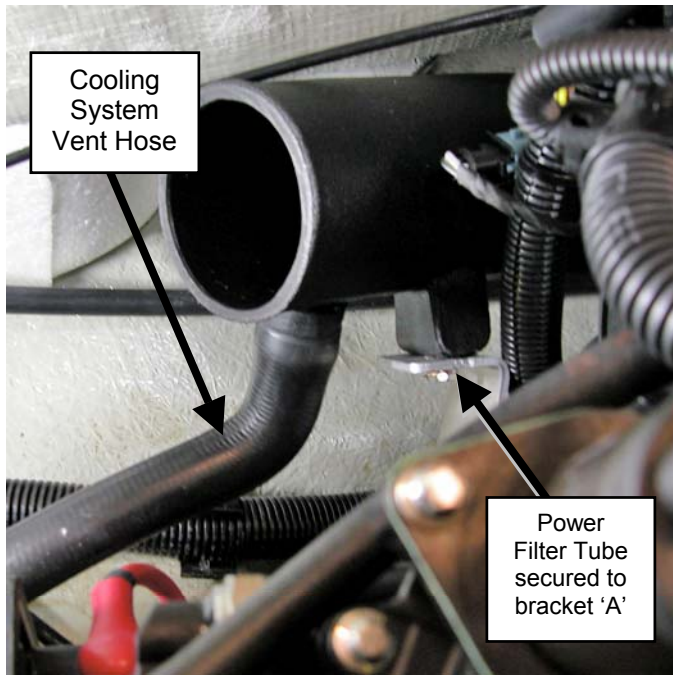


Illustration 9



Illustration 10



Illustration 11

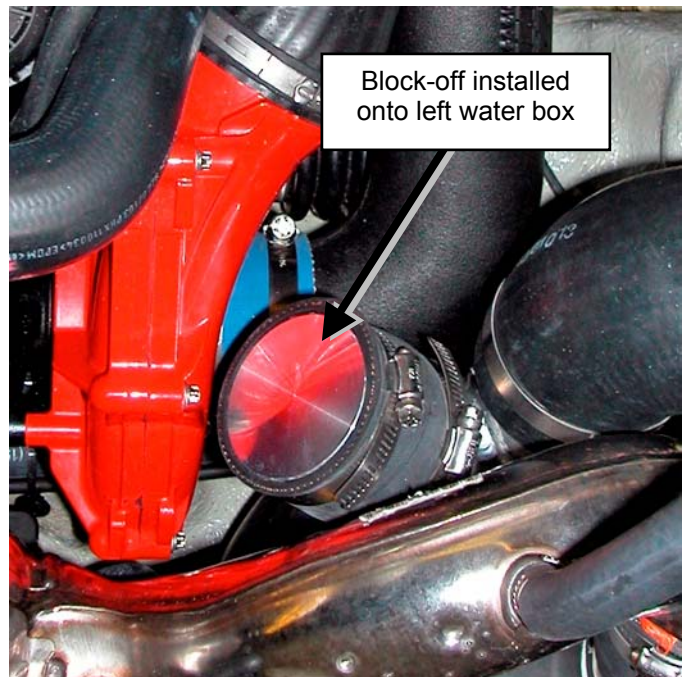


Illustration 12