



RIVA RACING
PERFORMANCE PRODUCTS & ACCESSORIES

Rear Exhaust Kit
PART# - RY15070



APPLICATION(S): 2012~18 Yamaha FX Models

We strongly recommend the use of a service manual to familiarize yourself with the various components and procedures involved with this installation. Please note that some of the original clamps, hoses and hardware removed in the disassembly process will be used in the installation process. These instructions have been written in point form and refer to illustrations. Please follow these step-by-step instructions and illustrations carefully.

***** ALLOW ENGINE TO COOL COMPLETELY BEFORE PERFORMING INSTALLATION *****

Required Specialty Tools
3-3/4" Hole Saw Bit

Part#
N/A

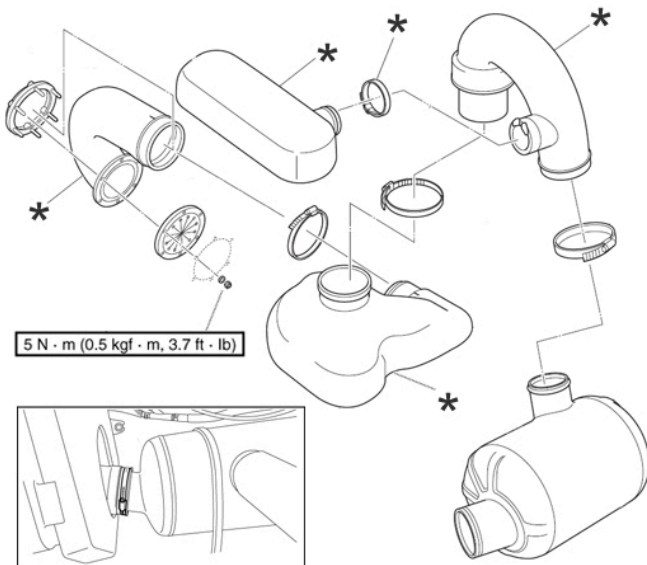
- INSTALLATION INSTRUCTIONS -

Remove seats and rear storage bin. Remove seat support (five bolts).

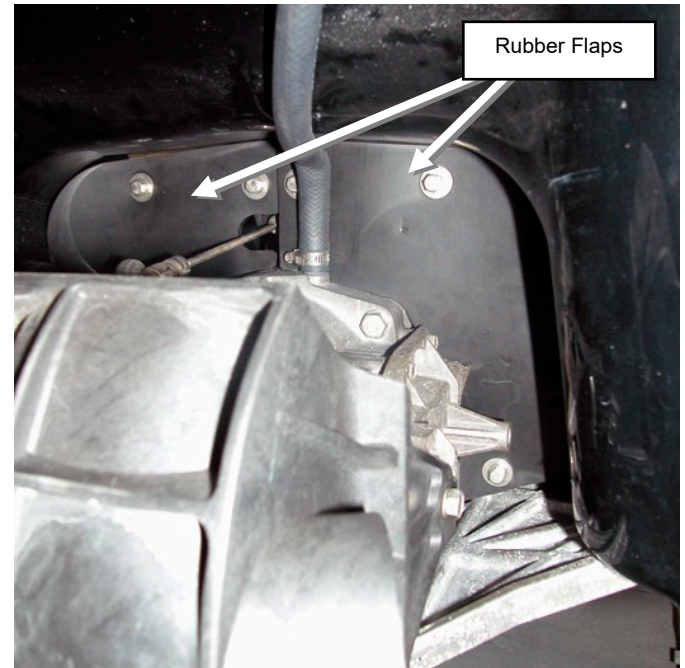


Inside engine compartment at rear of craft remove and discard exhaust baffles* and hose* between water box and exhaust outlet hose. **Save OE clamps for installation portion.**

* = Remove & Discard



In jet pump area locate and remove rubber flaps (2).

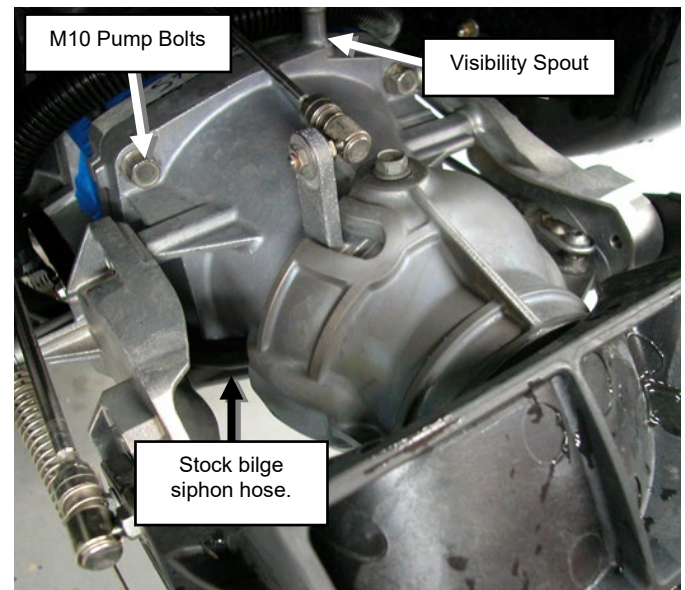


Remove speedo sensor (4 bolts) from ride plate.

Remove ride plate (4 bolts).

Disconnect steering, reverse and Q.S.T.S. cables.

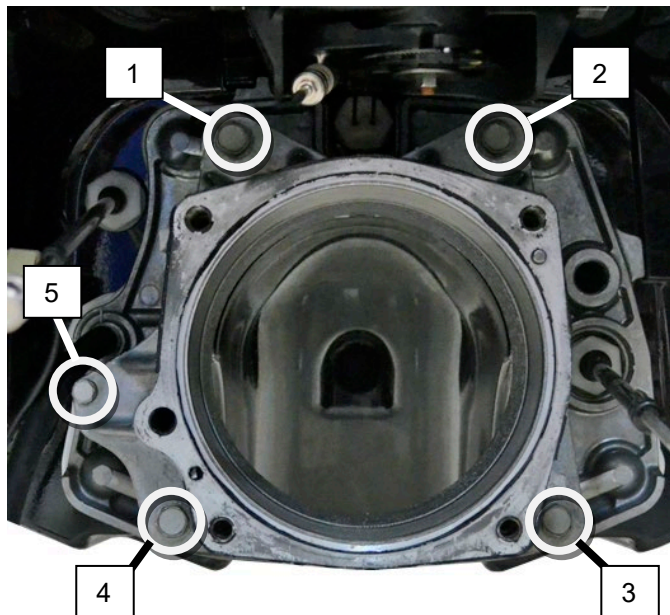
Disconnect visibility spout hose from top of reduction nozzle and stock bilge siphon hose from left side of reduction nozzle.



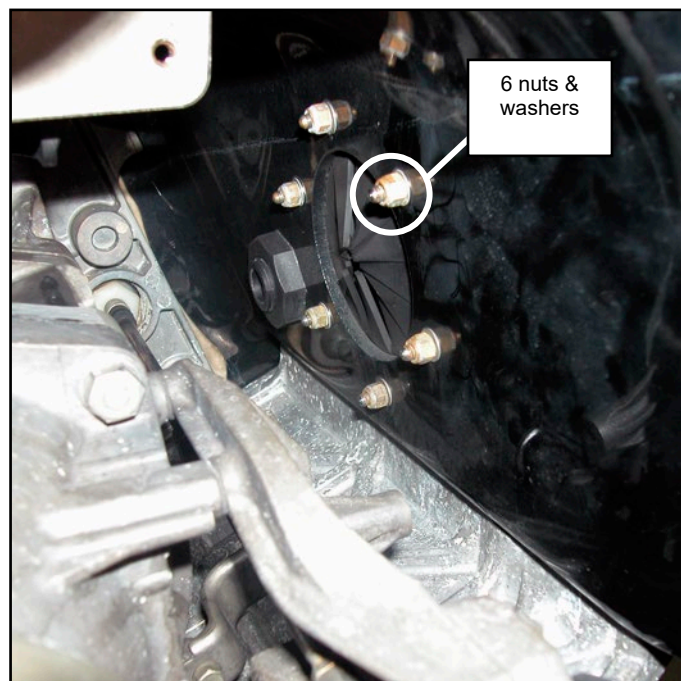
Remove reduction nozzle assembly (4 M10 bolts).

Remove jet pump assembly. **NOTE: Take care not to damage splines at end of drive shaft.**

Remove pump impeller wear ring (5 bolts).



At exhaust outlet remove the six nuts and washers securing exhaust outlet to hull.



Remove OE exhaust outlet hose from inside of hull. Remove aluminum ring with studs from exhaust outlet hose. **Retain ring.** Discard exhaust outlet hose and exhaust outlet valve.

Cut out supplied template (last page) and affix to right rear side of hull below rub rail as shown below.



Using a 3-3/4" hole saw bit remove section with gray circle.

Test fit supplied billet exhaust outlet. It may be necessary to grind or file additional material to enable outlet to fit. **NOTE: Do not remove too much material. Outlet should just fit into opening.**

Insert supplied billet exhaust outlet into newly created opening in transom so that 'R' logo is at bottom and contour of flange is flush against hull. Secure with tape.

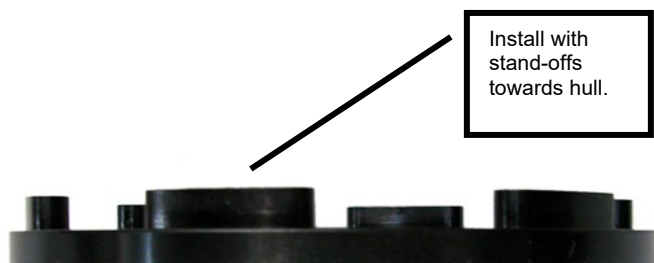


Drill one bolt hole and insert one supplied M6 button head screw. Repeat for remaining five bolts.

Remove outlet and thoroughly clean it as well as hull both inside and out.

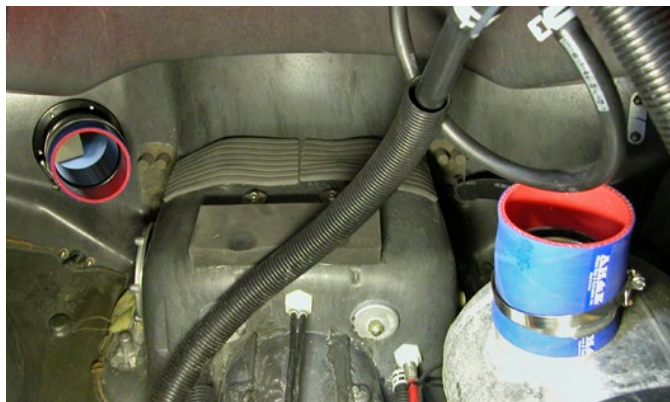
Install supplied rubber gasket onto back of billet exhaust outlet flange (adhesive side first). Install outlet into hull and secure with tape. **Apply Blue Loctite to the six supplied button head bolts and insert into outlet.**

From inside of hull carefully place supplied billet collar (side with raised stand-offs towards hull) onto exhaust outlet.



Slide onto outlet until you feel it touch one or both of the top two bolts. Carefully try to center one or both of the top two bolts in the threads of the collar. From outside of hull slowly tighten bolt aligned with collar. Once you feel it grab tighten a few turns. Move to opposite bolt and do the same. Once two opposing bolts easily screw into collar install remaining bolts and tighten. **NOTE: Do not over tighten bolts.**

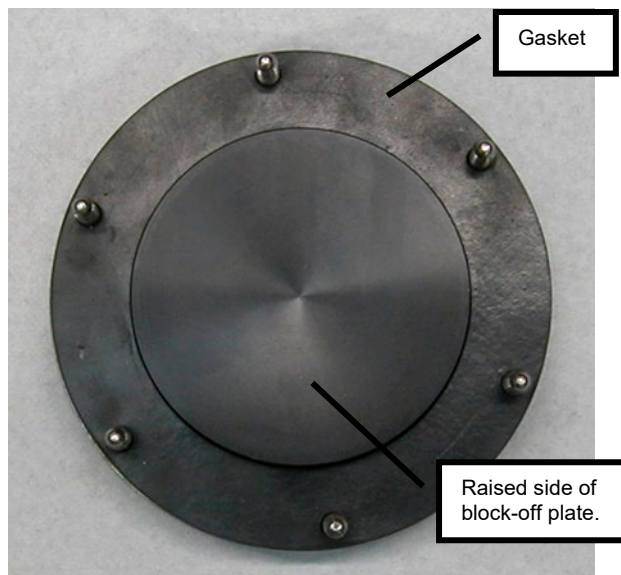
Install one of the supplied exhaust couplers onto billet exhaust outlet enough to secure coupler to outlet. Secure using the supplied hose clamp. **NOTE: Do not over tighten clamp.** Loosely install one of the previously removed OE hose clamps over exhaust outlet coupler.



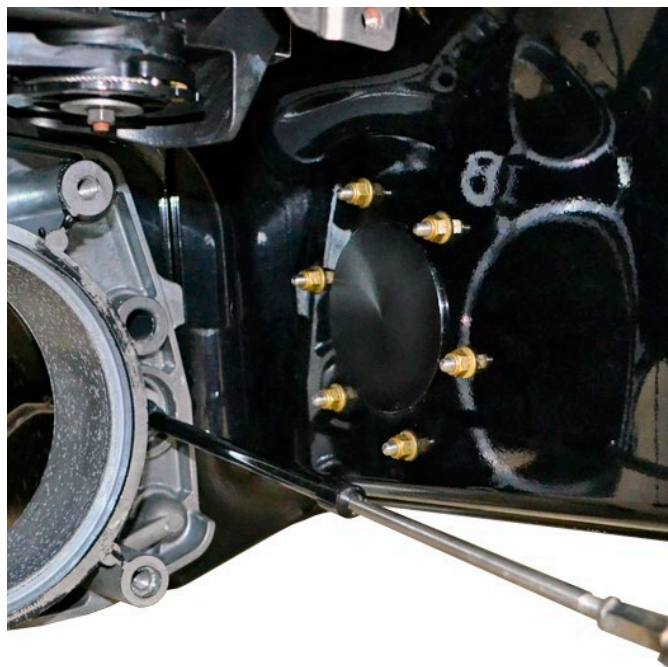
Thoroughly clean outside of water box outlet with a non-residual cleaner. Install second supplied exhaust coupler halfway onto outlet and secure with one of the previously removed OE hose clamps. **NOTE: Do not over tighten clamp.** Loosely install the last previously removed OE hose clamp over exhaust coupler.

Install supplied billet exhaust outlet block-off onto aluminum ring so that raised area faces the same direction as the six threaded studs.

Install supplied rubber gasket over studs and onto billet block-off (adhesive side first).



Thoroughly clean hull inside and out. Install exhaust outlet block-off from inside and secure using stock nuts and washers. **NOTE: Do not over tighten nuts.**



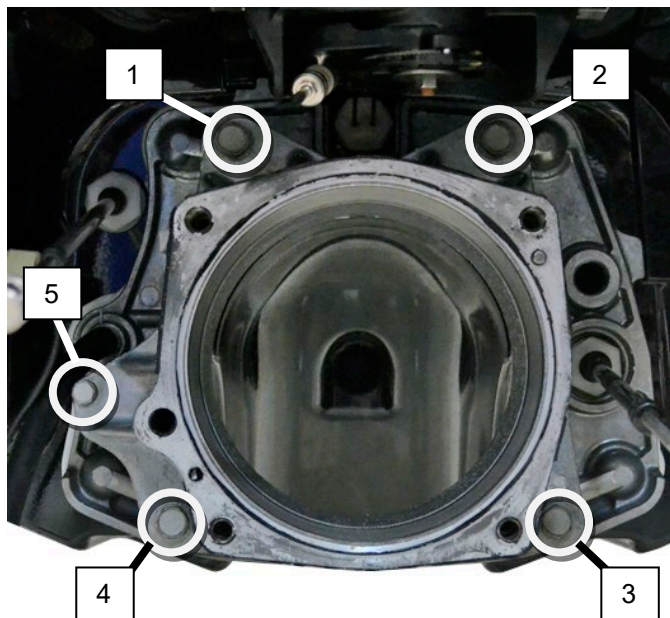
Insert straight end of supplied Exhaust Tube into rear exhaust outlet coupler. **TIP:** Use window cleaner to ease installation.

Insert curved end of Exhaust Tube into coupler on water box outlet. **TIP:** Use window cleaner to ease installation.



Tighten hose clamps (2) securing Exhaust Tube in place. **NOTE: Do not over tighten clamps.** Tighten coupler securing exhaust pipe to water box inlet if previously loosened.

Replace pump impeller wear ring. **NOTE: Apply blue Loctite to bolts.**



Torque Sequence:

1~4: Criss-cross. 40N•m (4.0 kgf•m, 29.5 ft•lb)

5: 17N•m (1.7 kgf•m, 12.5 ft•lb)

Replace jet pump. **NOTE: Apply blue Loctite to bolts. Torque bolts in a criss-cross pattern to 40N•m (4.0 kgf•m, 29.5 ft•lb).**

Replace rubber flaps at jet pump. **NOTE: : Apply blue Loctite to bolts. Do not over tighten bolts.**

Replace ride plate. **NOTE: Apply blue Loctite to bolts. Torque bolts to 17 N•m (12.5 ft•lb).**

Replace speedo sensor. **NOTE: Apply blue Loctite to bolts. Torque bolts to 4 N•m (3 ft•lb).**

Replace deck beam. **NOTE: Do not over tighten bolts.**

Check bilge for tools, rags, etc. Start craft and run using flush kit to check for exhaust leaks at connecting points for Rear Exhaust Kit.

Remember, the water belongs to everyone.

Please ride responsibly and respect the environment!

Technical Support

For answers to questions regarding installation or trouble shooting RIVA Performance Products contact: RIVA Technical Support directly at (954) 247-0705 or by e-mail at tech_support@rivamotorsports.com.

Limited Warranty

RIVA Rear Exhaust Kits carry a 90-day limited warranty to the original purchaser. They are warranted to be free of defects in materials and workmanship under normal use and service. Customer modified components will be void of warranty. This warranty is limited to defects in the primary components only. Finish and/or wear marks in or on primary components are not covered under this warranty.

RIVA Racing's liability is expressly limited to the repair or replacement of the components contained within or associated with this kit. RIVA Racing agrees to repair or at RIVA's option, replace any defective unit without charge, if product is returned to RIVA Racing freight prepaid within the warranty period. Any equipment returned which, in RIVA's opinion, has been subjected to misuse, abuse, overheating or accident shall not be covered by this warranty.

RIVA Racing shall have no liability for special, incidental or consequential damages or injury to persons or property from any cause arising from the sale, installation or use of this product.

No other warranty, express or implied, including, but not limited to the implied warranties of merchantability and fitness for a particular purpose, applies. Various states do not allow for the limitation of incidental or consequential damages and therefore the above exclusion or limitation may not apply to you.

Warranty does not include the expenses related to freight or transportation of parts or compensation for any inconvenience or loss of use while being repaired. A copy of the original invoice and a Return Authorization Number (RA#) must accompany all warranty claims.

Warranted replacement parts will be returned freight collect.



IMPORTANT:

Before printing make sure that
"Output Option/Printing Type/Scaling"
are set to **NONE** in the Print Dialog
Properties Window for your printer.

HULL'S PLANING SURFACE

TIE DOWN
CLEAT

USE 3-3/4" HOLE
SAW BIT TO MAKE
INITIAL OPENING.

**DO NOT
CUT OUT OF
TEMPLATE**



REBOARDING
STEP

CUT OUT TEMPLATE ALONG DOTTED LINE



CUT OUT TEMPLATE ALONG DOTTED LINE

