



GP1800, VXR/VXS Rear Exhaust Kit *PART# RY15061*

We strongly recommend the use of a service manual to familiarize yourself with the various components and procedures involved with this installation. Please note that some of the original clamps, hoses and hardware removed in the disassembly process will be reused in the installation process. These instructions have been written in step-by-step format and refer to illustrations. **Read through instructions entirely before performing installation.** Please follow these step-by-step instructions and illustrations carefully.

APPLICATION(S): GP1800, 2015 & Newer Yamaha VXR/VXS

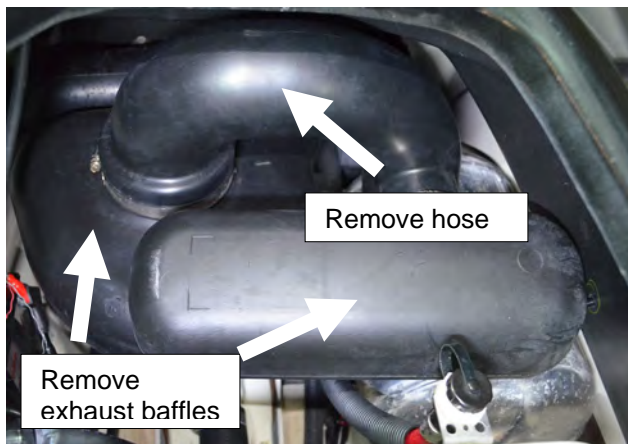
***** ALLOW ENGINE TO COOL COMPLETELY BEFORE PERFORMING INSTALLATION *****

- INSTALLATION INSTRUCTIONS -

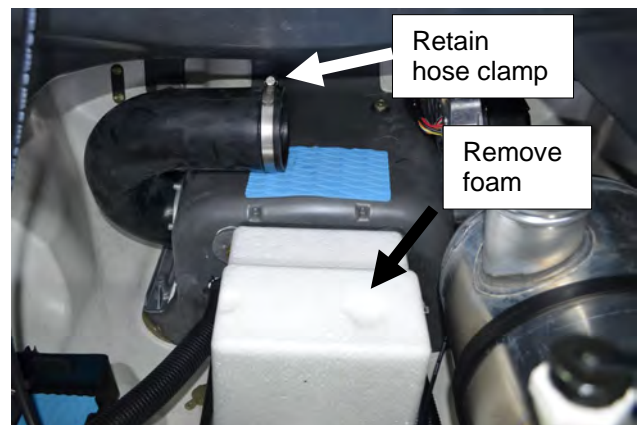
Remove bolts (5) securing deck beam to hull. Remove deck beam.



Remove small exhaust baffle, exhaust hose, and large exhaust baffle.



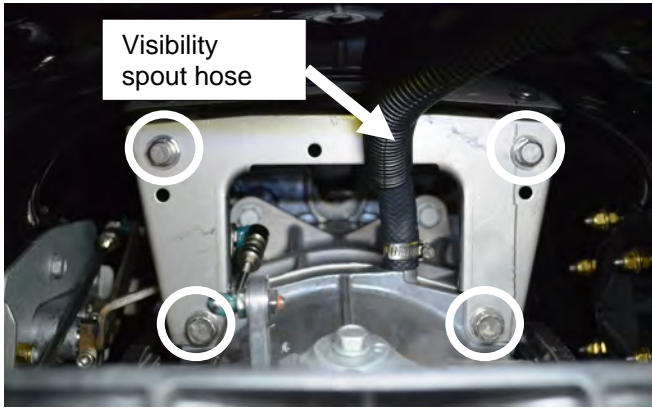
Retain hose clamp on exhaust outlet hose and from waterbox for later use. Remove flotation foam located on top of pump tunnel.



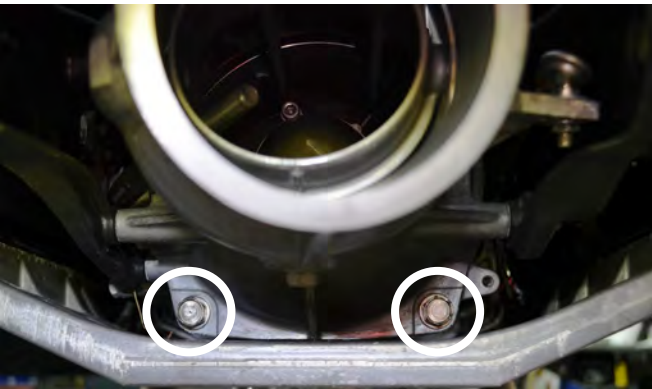
Disconnect steering cable from steering nozzle, trim rod from nozzle ring, reverse rod from reverse gate, and siphon hose from reduction nozzle.



Remove pump bracket bolts (4), and visibility spout hose from reduction nozzle



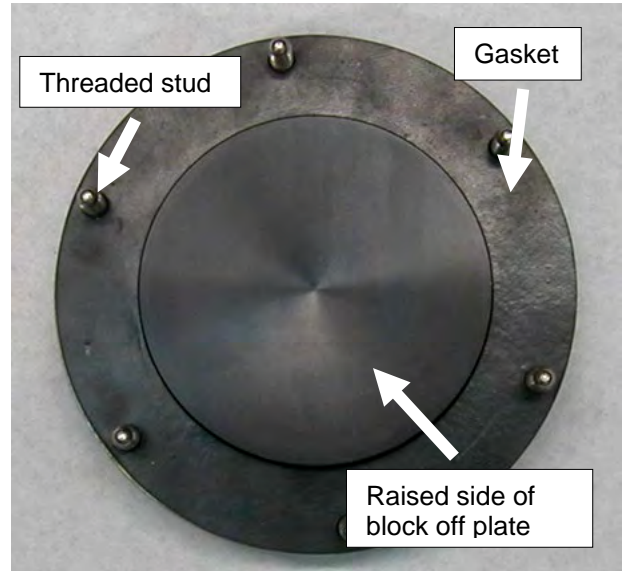
Remove lower reduction nozzle bolts (2). Remove reduction nozzle with reverse gate from jet pump.



Remove nuts (6) securing stock exhaust outlet to hull. Remove and discard exhaust outlet hose. Retain nuts and exhaust outlet collar.



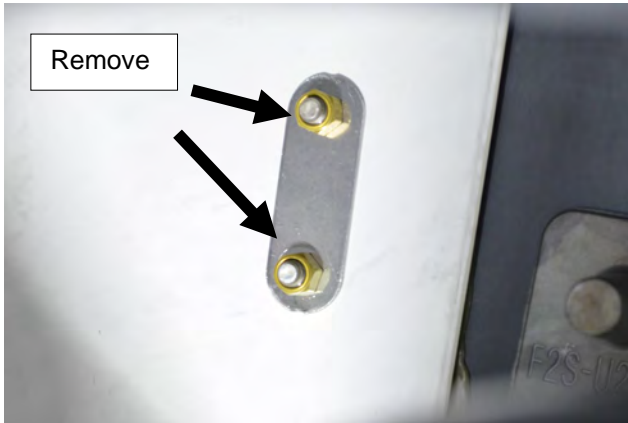
Place supplied billet exhaust outlet block-off onto stock exhaust collar so that raised side of block-off faces the same direction as the six threaded studs. Install supplied rubber gasket over studs and onto billet block-off (adhesive side first).



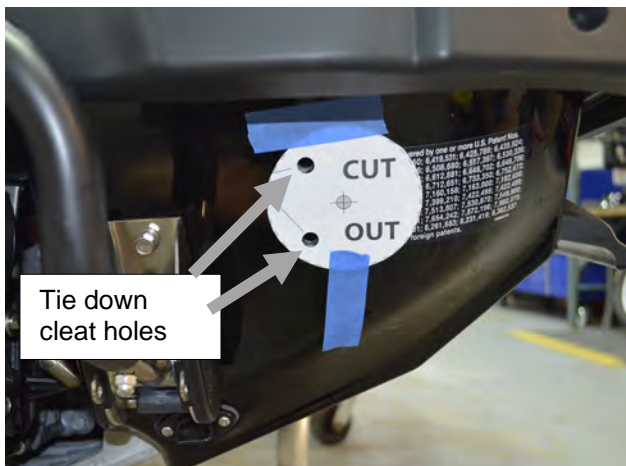
Install stock exhaust outlet block-off from inside hull. Secure using stock nuts (6). **NOTE: Do not over tighten nuts.**



Inside hull at right rear area remove nuts (2) securing tie down cleat. Remove cleat.



Cut out supplied template (last page) and affix to right rear side of hull using tie down cleat holes as a reference.



Drill a small pilot hole in the center of the template. (at the cross hairs) Remove template. Using a hole saw bit no larger than 3-3/4", create hole for outlet.

Test fit supplied billet exhaust outlet. It may be necessary to grind or file additional material to fit outlet. **Note: Do not remove too much material. Outlet should just fit into opening.**

Insert supplied exhaust outlet into newly created opening in transom. Ensure the "R" logo is at the bottom and contour of outlet flange is flush against the hull. Secure in position with tape.



Drill one bolt hole and insert one supplied M6 button head screw. Repeat for remaining five bolts working from opposing sides.

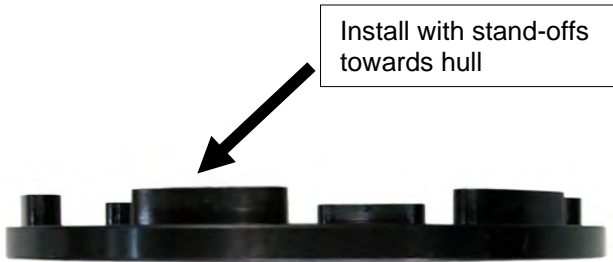
Remove outlet and thoroughly clean outlet and hull both inside and out.

Install supplied rubber gasket onto back of billet exhaust outlet flange (adhesive side first). **NOTE: DO NOT apply silicone sealant.**

Install outlet into hull and secure with tape. Apply Blue Loctite on two of the six supplied button head bolts and insert half way into outlet opposite each other. (see example in illustration below)

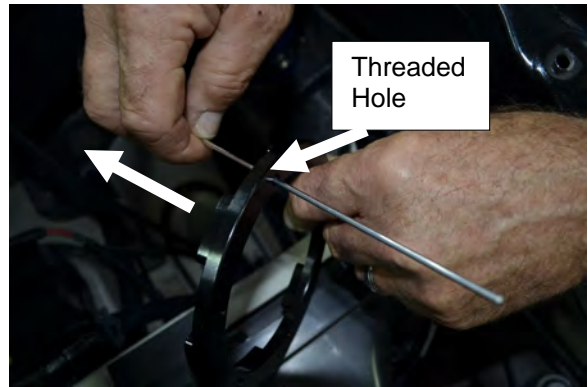
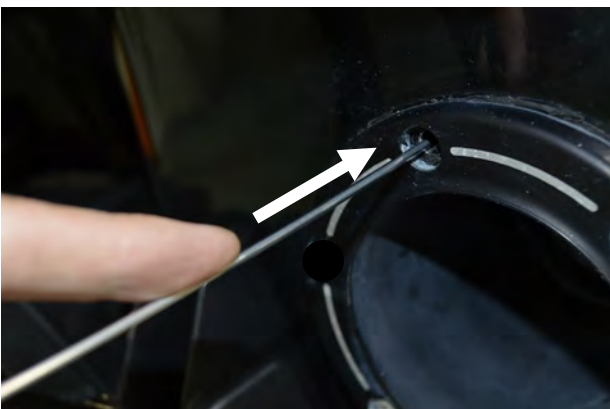


From inside of hull, carefully place supplied billet collar onto exhaust outlet. Ensure raised stand offs are toward the hull.



Slide collar onto outlet until you feel it touch the ends of the two bolts. Carefully try to center the top of one or both of the bolts in the threads in the collar. From outside of hull slowly tighten bolt aligned with collar. Once you feel it grab tighten a few turns. Move to opposite bolt and do the same. Once bolts easily screw into collar install remaining bolts and tighten evenly. **NOTE: Apply blue Loc-tite to bolts. Do not over tighten.**

Tip: It may be difficult to reach the outlet by hand to slide the collar onto the outlet. Take a straight stiff wire (like a straightened coat hanger wire). From the outside of the hull, run it through one of the bolt holes of the outlet into the hull. From inside the hull, slide the wire through a bolt hole on the collar. Guide the collar down the wire and into position onto the outlet.



Thoroughly clean outside of water box outlet with a non-residual cleaner. Install supplied exhaust coupler onto outlet and secure with OE clamp left on outlet during removal process. **NOTE: Do not over tighten clamp.** Loosely install other previously removed OE clamp over exhaust coupler.



Install supplied coupler onto outlet end of supplied rear exhaust pipe. Secure using supplied hose clamp. **Note: Do not over tighten clamp.**

Slide the second supplied hose clamp over the coupler and position next to first clamp. **Slightly** tighten just enough to keep in position.



Install exhaust outlet side of tube (side with coupler) onto rear exhaust outlet inside hull. Slide 2nd hose clamp down coupler & into position on outlet. Secure coupler onto outlet with clamp. **Note: Do not over tighten clamp.**

Tip: Use window cleaner on coupler to ease installation. Also, using a cordless ratchet help give some additional "reach" to secure the hose clamp in position.

Install curved end of exhaust tube into coupler on waterbox outlet. Secure in position with hose clamp. **Note: Do not over tighten clamp. Tip:** Use window cleaner on coupler to ease installation.

Note: It may be necessary to rotate waterbox to align outlet with exhaust tube. Loosen clamp securing coupler at waterbox inlet.



Align waterbox if necessary and secure clamp on waterbox inlet. **Note: Do not over tighten clamp.**



Reinstall reduction nozzle with reverse gate onto jet pump. Secure in position with 2 bottom reduction nozzle bolts. Do not fully tighten bolt yet. **Note: Apply blue Loctite to bolts.**

Reinstall pump bracket onto pump. Secure in position with the 2 short bracket bolts and 2 long top reduction nozzle bolts. **Note: Apply blue Loctite to bolts.**

Torque the 4 long reduction nozzle bolts to 29.5ft lbs.

Reconnect visibility spout hose to fitting on top of reduction nozzle.

Reconnect steering cable to steering nozzle.

Reconnect trim rod to nozzle ring.

Reconnect reverse rod to reverse gate.

Check bilge for tools, rags, etc. Run craft on a flush kit to check for proper operation.

***Remember, the water belongs to everyone.
Please ride responsibly and respect the environment!***

Technical Support

For answers to questions regarding installation or trouble shooting RIVA Performance Products contact:
RIVA Technical Support directly at (954) 247-0705 or by e-mail at tech_support@rivamotorsports.com.

Limited Warranty

RIVA Racing Rear Exhaust Kits carry a 90 day limited warranty to the original purchaser. They are warranted to be free of defects in materials and workmanship under normal use and service. Customer modified components will be void of warranty. This warranty is limited to defects in the primary components only. Finish and/or wear marks in or on primary components are not covered under this warranty.

RIVA Racing's liability is expressly limited to the repair or replacement of the components contained within or associated with this kit. RIVA Racing agrees to repair or at RIVA's option, replace any defective unit without charge, if product is returned to RIVA Racing freight prepaid within the warranty period. Any equipment returned which, in RIVA's opinion, has been subjected to misuse, abuse, overheating or accident shall not be covered by this warranty.

RIVA Racing shall have no liability for special, incidental or consequential damages or injury to persons or property from any cause arising from the sale, installation or use of this product.

No other warranty, express or implied, including, but not limited to the implied warranties of merchantability and fitness for a particular purpose, applies. Various states do not allow for the limitation of incidental or consequential damages and therefore the above exclusion or limitation may not apply to you.

Warranty does not include the expenses related to freight or transportation of parts or compensation for any inconvenience or loss of use while being repaired. A copy of the original invoice and a Return Authorization Number (RA#) must accompany all warranty claims.

Warranted replacement parts will be returned freight collect.

- Installation Template -
Rear Exhaust Kit

RY15061

