



RIVA RACING
PERFORMANCE PRODUCTS & ACCESSORIES

Rear Exhaust Kit

PART# - RY15050



APPLICATION(S): Yamaha FZR & FZS

We strongly recommend the use of a service manual to familiarize yourself with the various components and procedures involved with this installation. Please note that some of the original clamps, hoses and hardware removed in the disassembly process will be used in the installation process. These instructions have been written in step-by-step format and refer to illustrations. Read through instructions entirely before performing installation. Please follow these step-by-step instructions and illustrations carefully.

***** ALLOW ENGINE TO COOL COMPLETELY BEFORE PERFORMING INSTALLATION *****

Required Specialty Tools

3-3/4" Hole Saw Bit

Part#

N/A

- INSTALLATION INSTRUCTIONS -

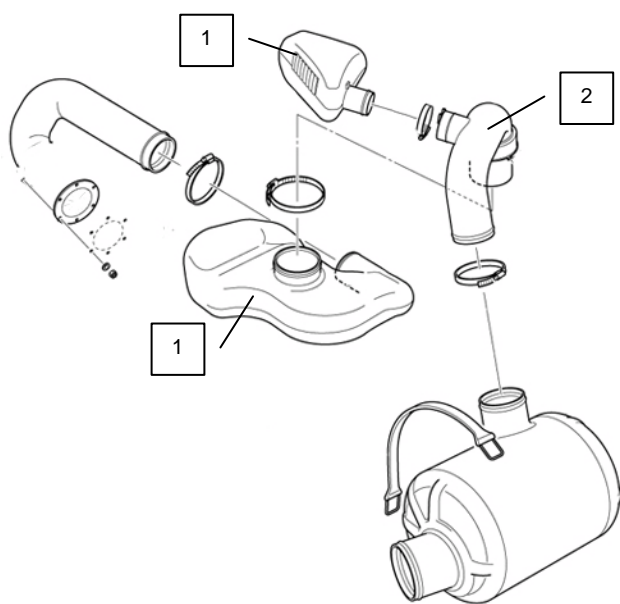
Allow engine to cool completely.

Remove seats and rear storage bin.

Remove rear grab handle/seat support. Four bolts at center and three under grab handle.



Inside engine compartment at rear of craft remove and discard exhaust baffles¹ and hose² between water box and exhaust outlet hose. **Save OEM clamps for installation portion.**



Loosen bolts (4) securing ride plate to hull.

In jet pump area locate and remove rubber flap at right side of jet pump unit.



3 bolts & washers

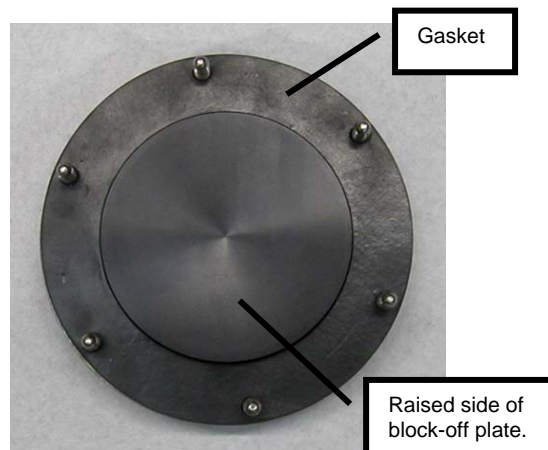
At exhaust outlet remove nuts and washers (6) securing exhaust outlet to hull.



6 nuts & washers

Remove OEM exhaust outlet hose from inside of hull. Remove aluminum ring with studs from exhaust outlet hose. **Retain ring.** Discard exhaust outlet hose and exhaust outlet valve.

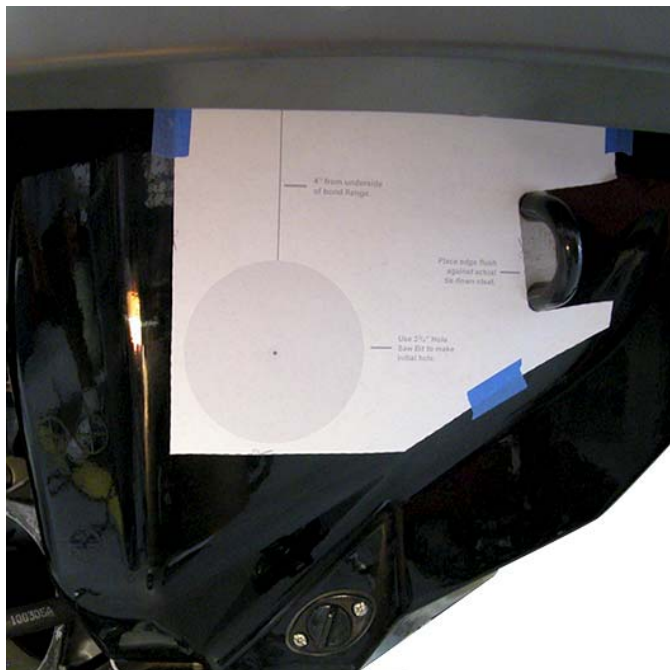
Install supplied billet exhaust outlet block-off onto aluminum ring so that raised area faces the same direction as the six threaded studs. Install supplied rubber gasket over studs and onto billet block-off (adhesive side first).



Gasket

Raised side of block-off plate.

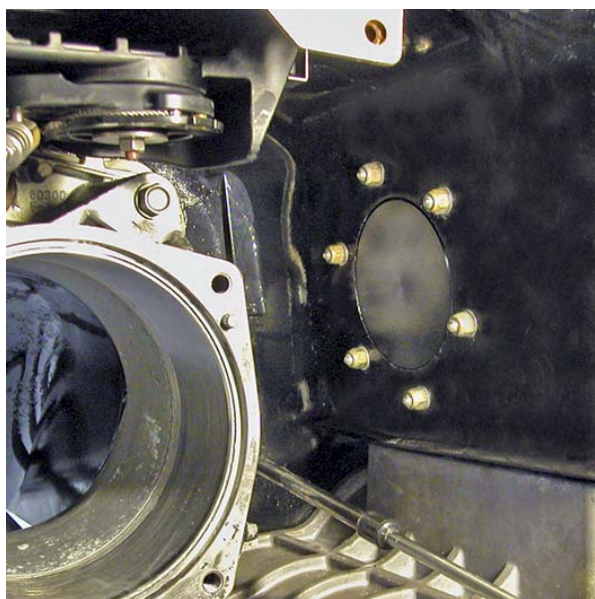
Cut out supplied template (last page) and affix to right rear side of hull below rub rail. Mark center only.



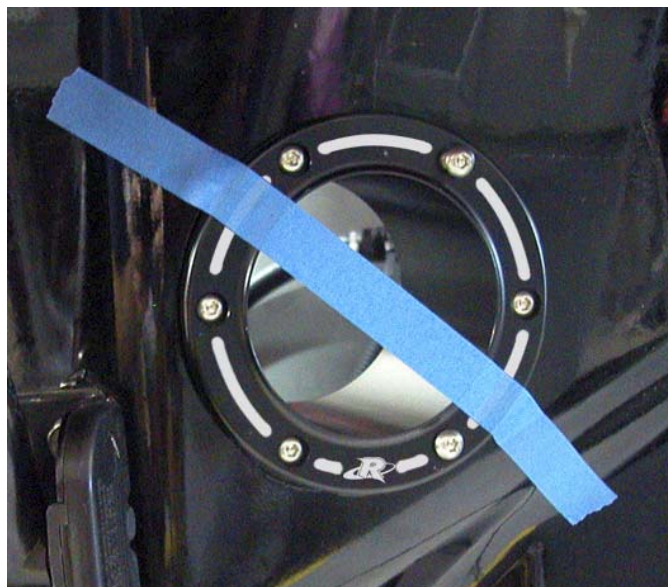
Using a 3-3/4" hole saw bit drill opening for supplied billet exhaust outlet.

Test fit supplied billet exhaust outlet. It may be necessary to grind or file additional material to enable outlet to fit. **NOTE: Do not remove too much material. Outlet should just fit into opening.**

Thoroughly clean hull inside and out. Install supplied exhaust outlet block-off from inside and secure evenly using stock nuts and washers. **NOTE: Do not over tighten nuts.**



Insert supplied billet exhaust outlet into newly created opening in transom so that 'R' logo is at bottom. Secure with tape.



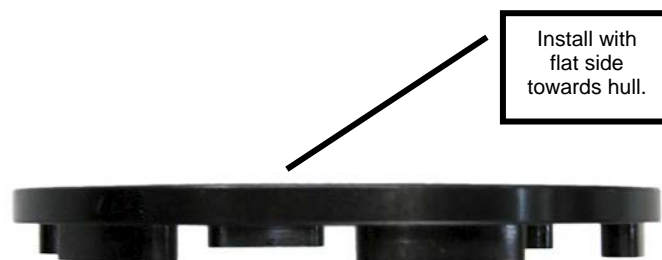
Drill one bolt hole and insert one supplied M6 button head bolts. Repeat for remaining bolts.

Remove outlet and thoroughly clean it as well as hull, both inside and out.

Install supplied rubber gasket onto back of billet exhaust outlet flange (adhesive side first). Install outlet into hull. **NOTE: Apply blue Loctite to threads on supplied button head bolts and insert into outlet.**

Secure outlet in place with tape

From inside of hull carefully place supplied billet collar (flat side towards hull) onto exhaust outlet.



Slide collar onto outlet until you feel it touch one or both of top two bolts. Carefully try to center one or both of the top two bolts in the threads of the collar. From outside of hull slowly tighten bolt aligned with collar. Once you feel it grab tighten a few turns. Move to opposite bolt and do the same. Once two opposing bolts easily screw into collar install remaining bolts and tighten evenly. **NOTE: Do not over tighten bolts.**

Install one of the supplied exhaust couplers onto billet exhaust outlet enough to secure coupler to outlet. Secure using the supplied hose clamp. **NOTE: Do not over tighten clamp.** Loosely install one of the previously removed OEM hose clamps over exhaust outlet coupler.



Thoroughly clean outside of water box outlet using a non-residual cleaner. Install second supplied exhaust coupler halfway onto outlet and secure with one of the previously removed OEM hose clamps. **NOTE: Do not over tighten clamp.** Loosely install the last previously removed OEM hose clamp over exhaust coupler.

Insert straight end of supplied Exhaust Tube into rear exhaust outlet coupler. **TIP:** Use window cleaner to ease installation.

Insert curved end of Exhaust Tube into coupler on water box outlet. **TIP:** Use window cleaner to ease installation.



Tighten hose clamps (2) securing Exhaust Tube in place. **NOTE: Do not over tighten clamps.** Tighten coupler securing exhaust pipe to water box inlet if loosened.

Replace rubber flap at right side of jet pump. **NOTE: NOTE: Apply blue Loctite to bolts. Do not over tighten.**

Replace ride plate. **NOTE: Apply blue Loctite to bolts. Torque evenly to 17 N•m (12.5 ft•lb).**

Replace speedo sensor. **NOTE: Apply blue Loctite to bolts. Torque evenly to 4 N•m (3 ft•lb).**

Replace deck beam. **NOTE: Apply blue Loctite to bolts. Do not over tighten.**

Check bilge for tools, rags, etc. Start craft and run using flush kit to check for exhaust leaks at connecting points for Rear Exhaust Kit.

Tighten hose clamps (2) securing Exhaust Tube in place. **NOTE: Do not over tighten clamps.** Tighten coupler securing exhaust pipe to water box inlet if loosened.

Replace rubber flap at right side of jet pump. **NOTE: NOTE: Apply blue Loctite to bolts. Do not over tighten.**

Replace ride plate. **NOTE: Apply blue Loctite to bolts. Torque evenly to 17 N•m (12.5 ft•lb).**

Replace speedo sensor. **NOTE: Apply blue Loctite to bolts. Torque evenly to 4 N•m (3 ft•lb).**

Replace deck beam. **NOTE: Apply blue Loctite to bolts. Do not over tighten.**

Check bilge for tools, rags, etc. Start craft and run using flush kit to check for exhaust leaks at connecting points for Rear Exhaust Kit.

***Remember, the water belongs to everyone.
Please ride responsibly and respect the environment!***

Technical Support

For answers to questions regarding installation or trouble shooting RIVA Performance Products contact:
RIVA Technical Support directly at (954) 247-0705 or by e-mail at tech_support@rivamotorsports.com

Limited Warranty

RIVA Racing Rear Exhaust Kits carry a 90-day limited warranty to the original purchaser. They are warranted to be free of defects in materials and workmanship under normal use and service. Customer modified components will be void of warranty. This warranty is limited to defects in the primary components only. Finish and/or wear marks in or on primary components are not covered under this warranty.

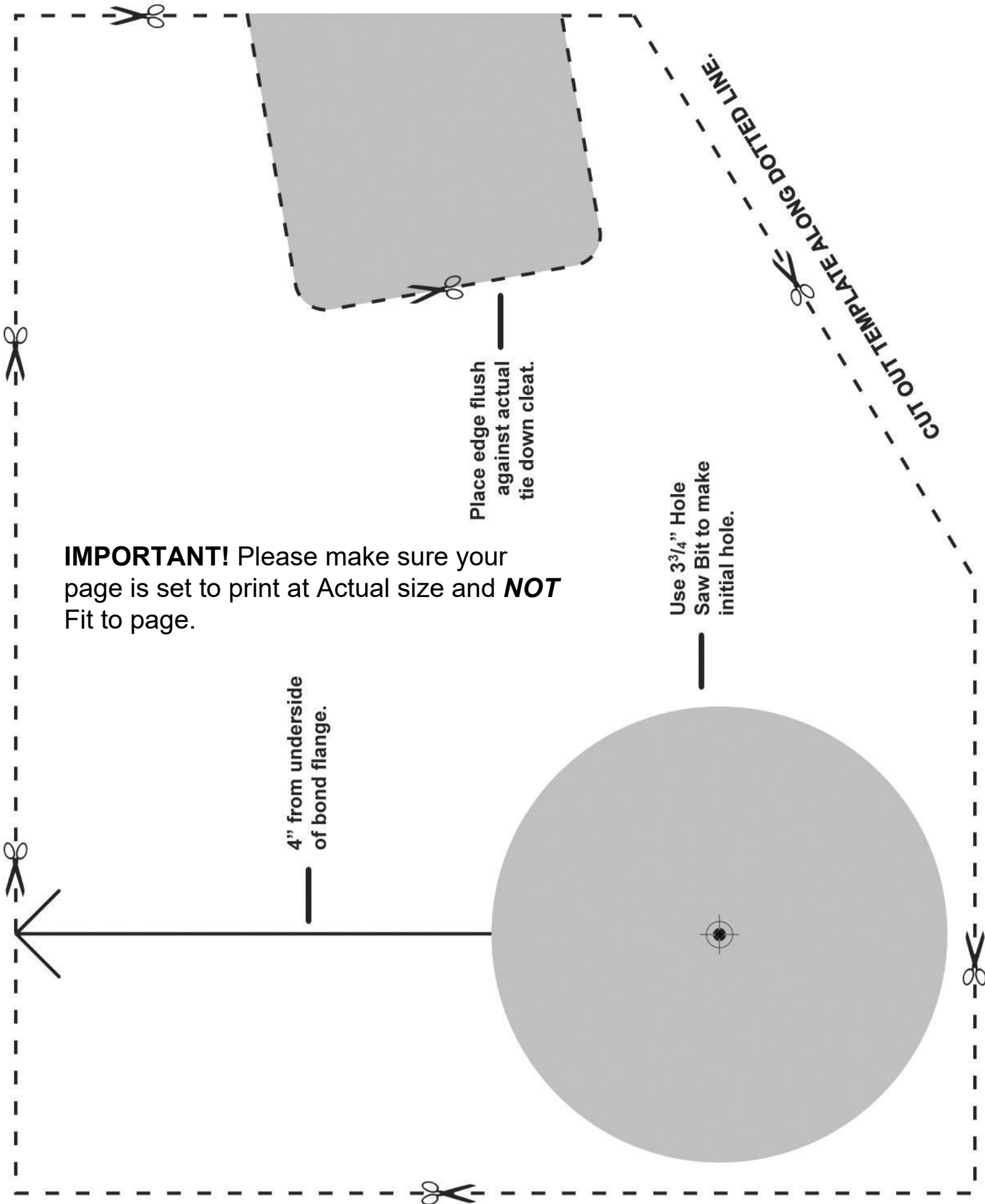
RIVA Racing's liability is expressly limited to the repair or replacement of the components contained within or associated with this kit. RIVA Racing agrees to repair or at RIVA's option, replace any defective unit without charge, if product is returned to RIVA Racing freight prepaid within the warranty period. Any equipment returned which, in RIVA's opinion, has been subjected to misuse, abuse, overheating or accident shall not be covered by this warranty.

RIVA Racing shall have no liability for special, incidental or consequential damages or injury to persons or property from any cause arising from the sale, installation or use of this product.

No other warranty, express or implied, including, but not limited to the implied warranties of merchantability and fitness for a particular purpose, applies. Various states do not allow for the limitation of incidental or consequential damages and therefore the above exclusion or limitation may not apply to you.

Warranty does not include the expenses related to freight or transportation of parts or compensation for any inconvenience or loss of use while being repaired. A copy of the original invoice must accompany all warranty claims.

Warranted replacement parts will be returned freight collect.



IMPORTANT! Please make sure your page is set to print at Actual size and **NOT** Fit to page.