



P/N# RY1620

3671 N. Dixie Highway Pompano Beach, FL 33064
Phone (954)-785-4820 (954)-785-2535 FAX Riva Yamaha on Line: <http://www.rivayamaha.com>

GP1200R Free Flow Exhaust Kit

Installation Instructions

Applications: Yamaha 00' GP1200R WaveRunner

List of Parts

Qty.	Description
1	Aluminum Crossover Tube

Note: This is a racing component. It is designed for competition use only. The Yamaha limited warranty does not cover possible failures caused by this component.

WARNING! DISCONNECT BATTERY AND TURN FUEL OFF BEFORE PERFORMING WORK.

This Exhaust Kit can be difficult to install, even for experienced mechanics. We suggest having it installed by a performance watercraft shop, if you do not have the technical experience.

1. Remove the stock water tank (sound suppression muffler), foam, and exhaust hose, shown in Illustration # 1 and 2. Do not discard factory hardware some items will be used later during installation. **Note:** Illustration # 1 has numbered sequence for order of removal. If unsure of location and removal procedures, consult your Yamaha water vehicle's service manual.

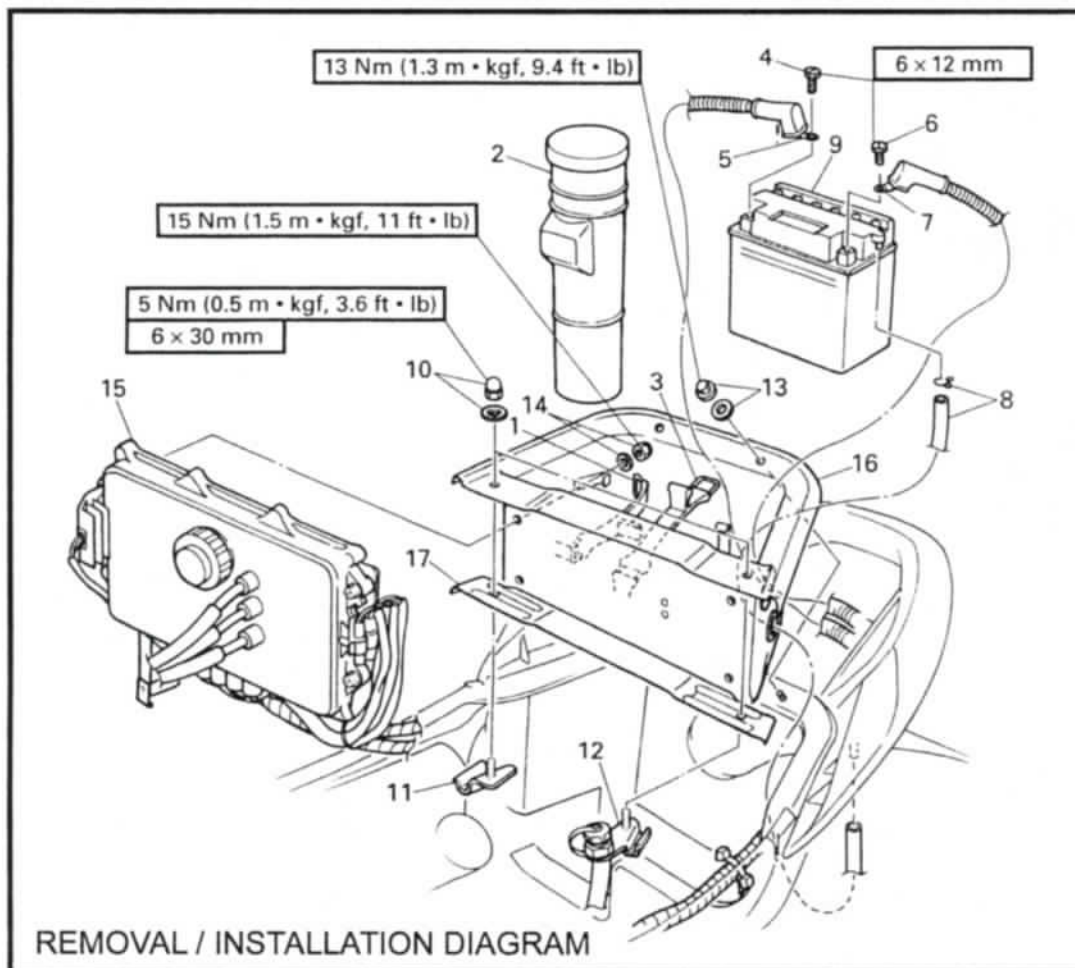


Illustration #1

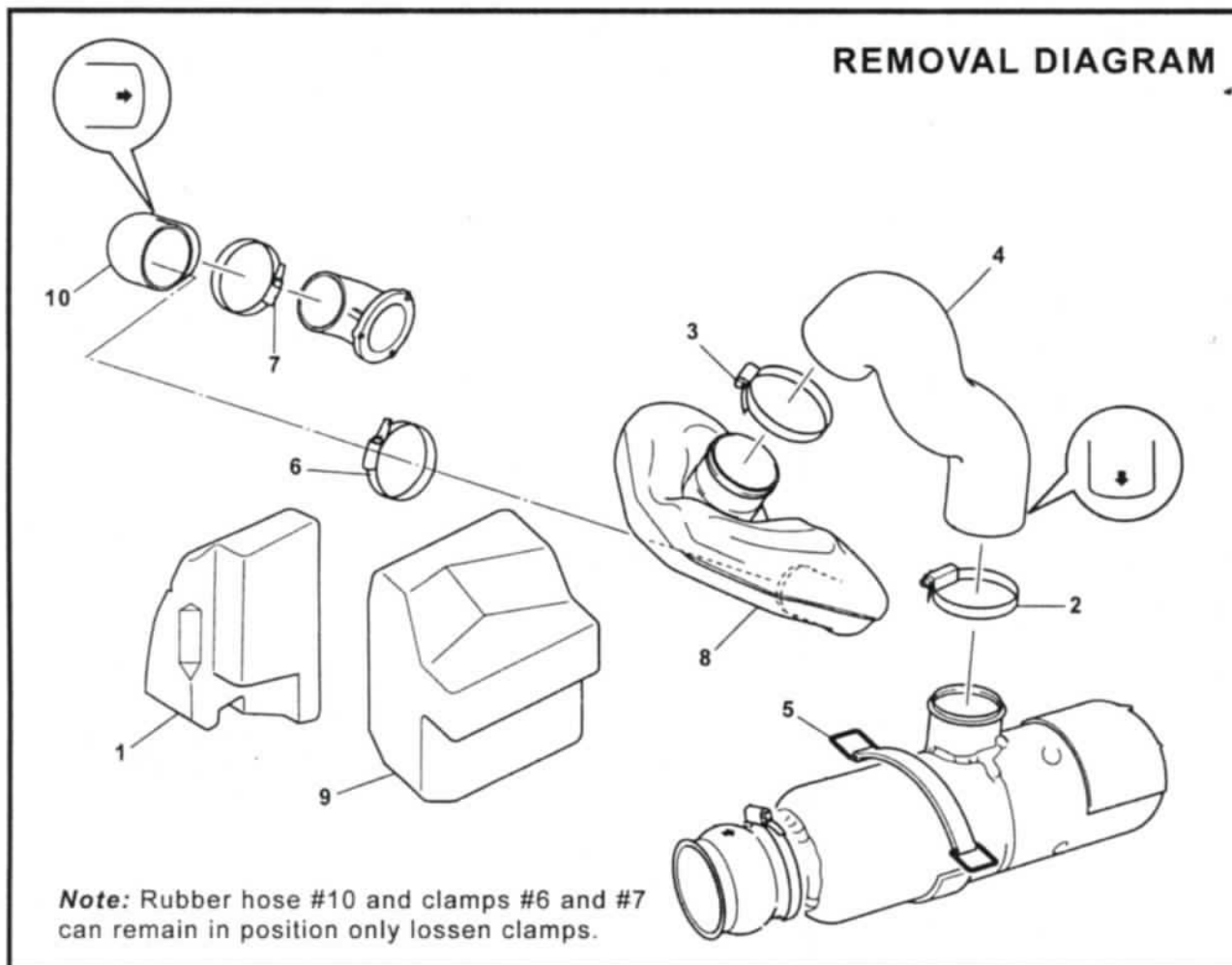


Illustration #2

2. Measure and cut removed rubber exhaust hose as shown in Illustration #3. **Note:** Rubber exhaust hose has one end embossed with part number and small arrow on it, this end attaches to the water box and is also the beginning point to measure from and to the location to cut the hose. Please take your time and recheck measurements before cutting rubber exhaust hose. **Tip:** To make a straight cut use one of the factory hose clamps and align with measurements, trace outer edge of clamp, recheck measurements and make your cut.
3. Install the newly cut rubber exhaust hose (embossed end) onto the water box and slip the factory clamps over hoses but do not tighten. Next position supplied aluminum crossover tube into each open end of the installed rubber exhaust hoses. Recheck water box and hose position and tighten clamps. **Note:** Illustration #3 has numbered sequence (1- 8) for order if installation. Use glass cleaner if necessary to aid in crossover tube and hose installation (do not use silicone or WD-40). It may be necessary to loosen the water box and reposition it to align crossover tube and rubber exhaust hoses.

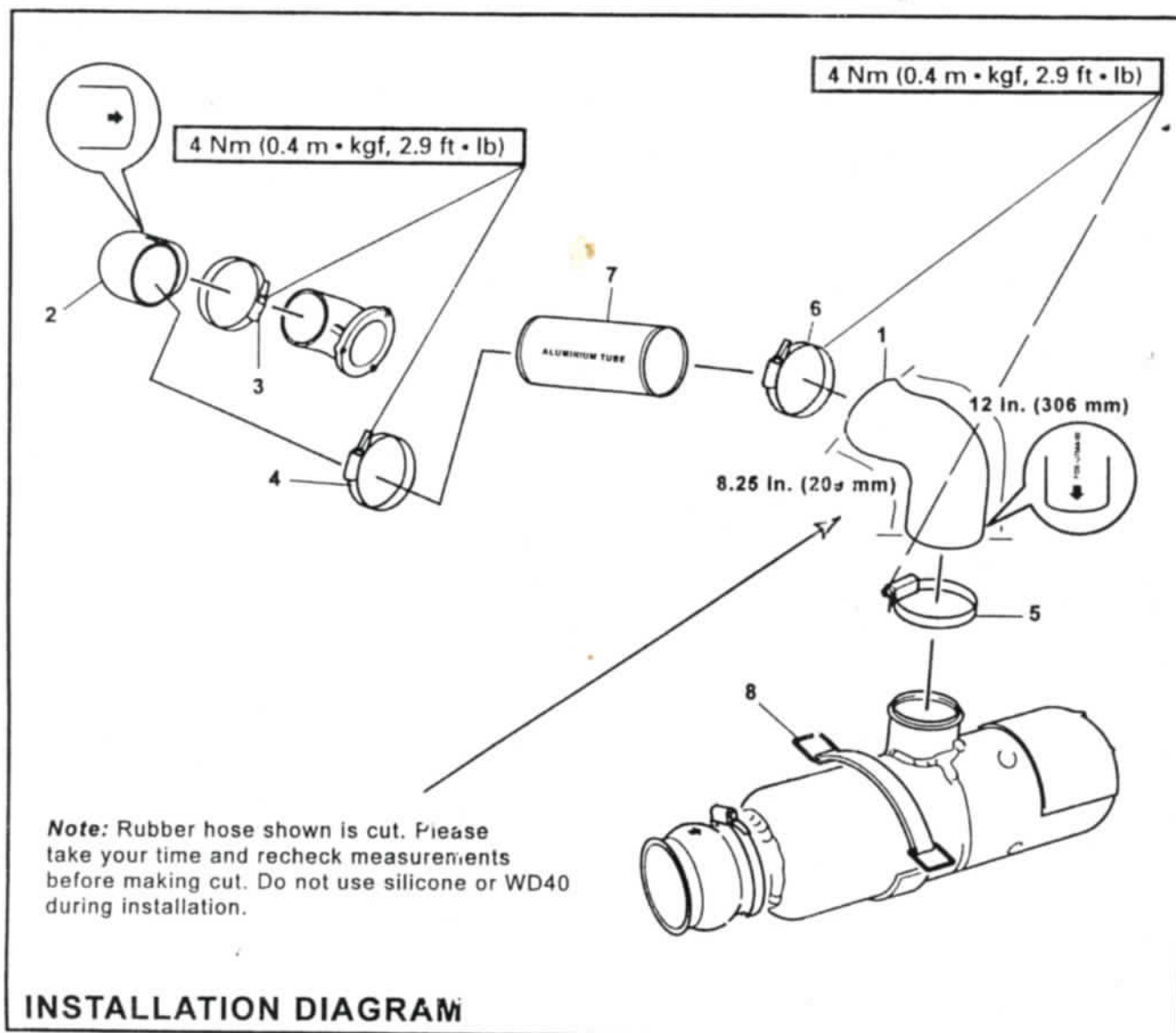


Illustration #3

4. Reinstall any components temporarily removed to aid in installation, check bilge area for tools and / or parts. Your installation is now complete. **Note:** Reverse the removal steps for installation shown in Illustration #1. If unsure of assembly procedures and component locations, consult your Yamaha water vehicle's service manual or components installation instructions.

IMPORTANT: Technical Support

For answers to questions about installation, trouble shooting RIVA Yamaha Free Flow Exhaust Kit, contact:

RIVA Yamaha @ (954) 247-0705 (ask for Tech Support)

or your local Yamaha Accessory Dealer

<http://www.rivayamaha.com> Tech e-mail: bubbak@rivayamaha.com

RIVA Yamaha Free Flow Exhaust Kit

Limited Warranty

RIVA Yamaha Free Flow Exhaust Kits are warranted for the 90 Days of the original purchaser for materials only. This is limited to defects in the aluminum parts. Hoses, hardware, and clamps are not covered under this warranty. Also understand that this warranty does not cover any parts on a watercraft other than the crossover tube. Modified RIVA Exhaust Free Flow Kits will be void of warranty.

Warranty does not include expenses related to freight or transportation of parts, or compensation for any inconvenience or loss of use while being repaired. A copy of the original invoice must accompany all warranty claims.

RIVA Yamaha will repair or replace parts at our discretion. Replacement or repaired parts will be returned freight collect.