



**Sea Doo Spark Waterbox**

**PART# - RS16131**



**APPLICATION(S):** Sea Doo Spark 2up & 3up models.

**Note:** Installation of this waterbox requires either the RIVA Free Flow Exhaust kit for 2up & 3up models. (Part # RS16130), or the RIVA Rear Exhaust Kit for 2up models only. (Part # RS15130)

We strongly recommend the use of a service manual to familiarize yourself with the various components and procedures involved with this installation. Please note that some of the original clamps, hoses and hardware removed in the disassembly process will be used in the installation process. These instructions have been written in step-by-step format and refer to illustrations. Read through instructions entirely before performing installation. Please follow these step-by-step instructions and illustrations carefully.

**\*\*\* ALLOW ENGINE TO COOL COMPLETELY BEFORE PERFORMING INSTALLATION \*\*\***

**Required Specialty Tools**

T30 Torx bit

**Part#**

N/A

**Recommended tools**

Sea Doo Service Manual

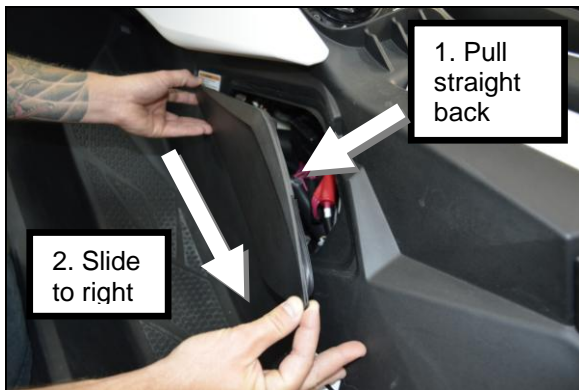
**Part#**

N/A

**- INSTALLATION INSTRUCTIONS -**

Step 1: Remove seat.

Step 2: Remove left side access panel by pulling top right side of panel straight out about 1/2". Then slide panel to right.



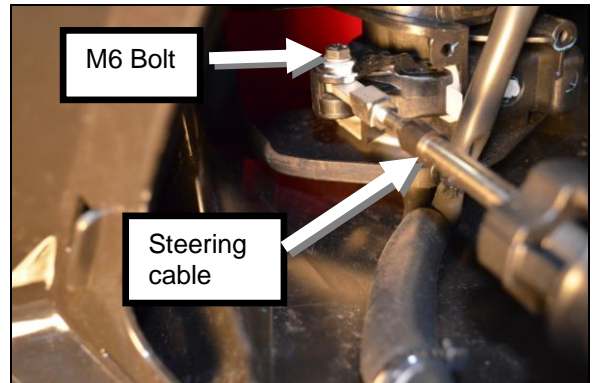
Step 3: Locate steering & gauge wire harness. Disconnect plugs by sliding back red lock tabs on each connector. Push clip lock on each plug & pull plug apart.



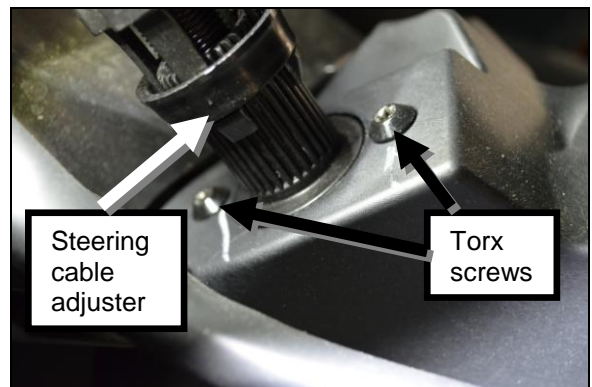
Step 4: Remove left side knee pad by pulling on right side of panel.



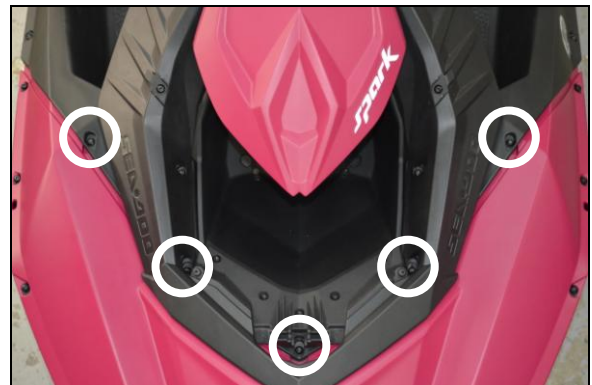
Step 5: Locate end of steering cable at steering column. Remove M6 bolt holding steering cable to column & disconnect steering cable.



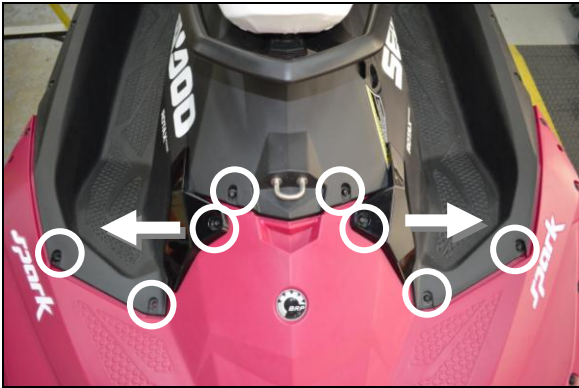
Step 6: Remove Torx screws (2) holding steering cable to top deck.



Step 7: Remove the five (5) circled self tapping screws at front of top deck. (see illustration below)



Step 6: Remove the eight (8) circled self tapping screws at the rear of the top deck. Remove rear trim pieces by sliding out of position. (see illustration below)



Step 7: Remove the ten (10) circled Torx screws & nuts on the sides of the hull. (see illustration below)



Step 8: Remove three (3) self tapping screws located at the fuel fill cap.



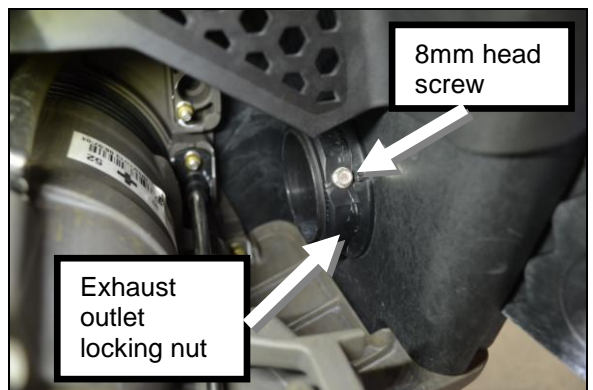
Step 9: With assistance, remove top deck by lifting straight up from lower deck. Guide steering cable through cable access hole in top deck.



Step 10: Loosen hose clamp on exhaust hose at waterbox.



Step 11: Remove 8mm head screw on exhaust outlet locking nut. Remove exhaust outlet locking nut.

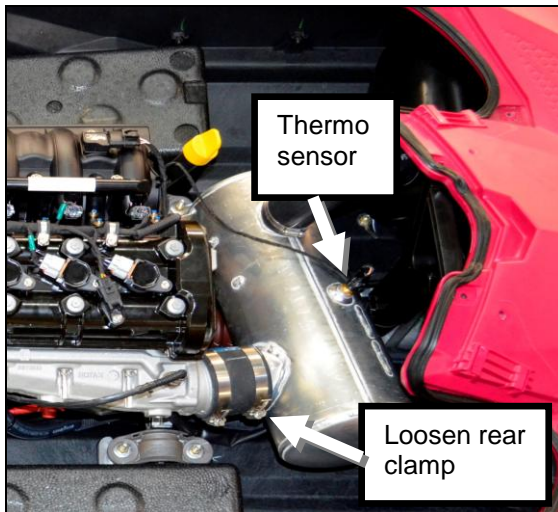


Step 12: Remove exhaust hose from waterbox & remove exhaust resonator box from hull.



Step 13: Cut zip tie securing wire to thermo sensor. Unplug wire connector on thermo sensor.

Step 14: Loosen rear hose clamp on waterbox inlet.



Step 15: Pull waterbox inlet out from exhaust coupler and remove waterbox from hull.

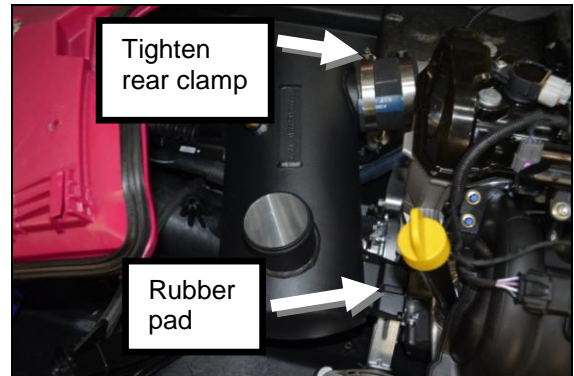
Step 16: Remove thermo sensor from OE waterbox & install in RIVA waterbox. **Note: Apply Loctite 518 sealant or equivalent on threads. Do not over tighten.**

Step 17: At this point, the exhaust outlet needs to be installed. Refer to installation instructions of either the RIVA Free Flow exhaust kit, or the RIVA Rear Exhaust Kit.

Step 18: Once exhaust outlet is installed, install Riva waterbox in same location as the stock waterbox. Ensure waterbox is properly placed on rubber pad.

Secure in place by tightening rear exhaust coupler clamp. **Do not over tighten clamp.**

Step 19: Reconnect thermo sensor wire. Use zip tie to secure wire to sensor.



Step 20: **Free Flow Exhaust application:** Install supplied 2.75"x2.25" reduction coupler on waterbox outlet. Spray glass cleaner on inside of coupler to ease installation. Secure coupler on waterbox with supplied hose clamp. **Do not over tighten clamp.**

**For Rear Exhaust application:** Install supplied 2.75" straight coupler on waterbox outlet. Spray glass cleaner on inside of coupler to ease installation. Secure coupler on waterbox with supplied hose clamp. **Do not over tighten clamp.**

Step 21: Install RIVA exhaust pipe, connecting waterbox to exhaust outlet. (refer to Free Flow or Rear Exhaust instructions)

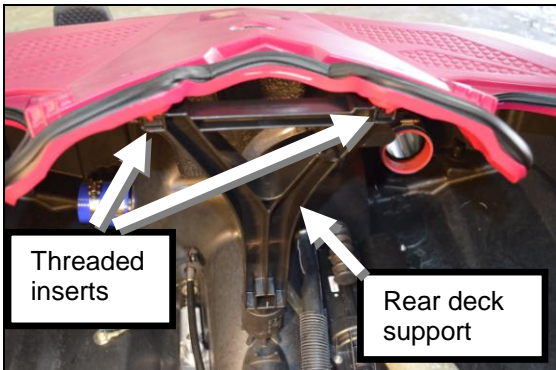
Free Flow Installation:



Rear Exhaust Kit Installation:

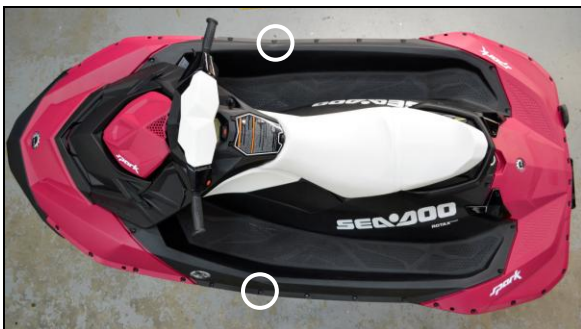


Step 22: Reinstall top deck to lower deck. (refer to step 9) Make sure rear deck support is correctly positioned and top threaded inserts (2) are in place. (see illustration below)



Guide steering cable through cable access hole on top deck. Use care to ensure the rubber deck seals are properly sealing. Line up screw holes between the top & lower deck.

Step 23: Reinstall bolts, nuts & washers (2) at side alignment tabs first. (circled in illustration below) Torque to 3.5 N.m / 31 inch lbs.



Step 24: Install rear support screws (circled in illustration below) Torque to 5.5 N.m / 49 inch lbs.



Step 25: Install side rail bolts, nuts & washers. (circled in illustration below) Torque to 3.5 N.m / 31 inch lbs.

**Note: Sea Doo recommends replacing these M6 side elastic stop nuts. Sea Doo replacement part # is 232561200.**



Step 26: Reinstall rear trim pieces (refer to step 8) & reinstall self tapping screws at front & back of hull. (circled in illustration below) Torque to 5.5 N.m / 49 inch lbs.



Step 27: Reinstall self tapping screws (3) at gas fill cap. Torque to 4.5 N.m / 40 inch lbs. (refer to step 10)

Step 28: Reconnect the steering & gauge wire harness. Make sure plugs “click” when connected. Lock each plug together by sliding red locking tab.



Step 29: Reinstall self tapping screws (2) holding steering cable adjustment to top deck.(refer to step 6)

Step 30: Reinstall end of steering cable to steering column arm and secure with M6 bolt. (refer to step 5)

Step 31: Reinstall left side knee pad (refer to step 4) and left side access panel (refer to step 2) and reinstall seat.

Installation is now complete. Thoroughly inspect for tools, rags, parts, etc. Run craft on stand using flush kit to check for proper operation.

***Remember, the water belongs to everyone.  
Please ride responsibly and respect the environment!***

### **Technical Support**

For answers to questions regarding installation or trouble shooting RIVA Performance Products contact: RIVA Technical Support directly at (954) 247-0705 or by e-mail at [tech\\_support@rivamotorsports.com](mailto:tech_support@rivamotorsports.com).

### **Limited Warranty**

RIVA Free Flow Exhaust Kits carry a 90 day limited warranty to the original purchaser. They are warranted to be free of defects in materials and workmanship under normal use and service. Customer modified components will be void of warranty. This warranty is limited to defects in the primary components only. Finish and/or wear marks in or on primary components are not covered under this warranty.

RIVA Racing's liability is expressly limited to the repair or replacement of the components contained within or associated with this kit. RIVA Racing agrees to repair or at RIVA's option, replace any defective unit without charge, if product is returned to RIVA Racing freight prepaid within the warranty period. Any equipment returned which, in RIVA's opinion, has been subjected to misuse, abuse, overheating or accident shall not be covered by this warranty.

RIVA Racing shall have no liability for special, incidental or consequential damages or injury to persons or property from any cause arising from the sale, installation or use of this product.

No other warranty, express or implied, including, but not limited to the implied warranties of merchantability and fitness for a particular purpose, applies. Various states do not allow for the limitation of incidental or consequential damages and therefore the above exclusion or limitation may not apply to you.

Warranty does not include the expenses related to freight or transportation of parts or compensation for any inconvenience or loss of use while being repaired. A copy of the original invoice and a Return Authorization Number (RA#) must accompany all warranty claims.

Warranted replacement parts will be returned freight collect.