



**RIVA RACING**  
PERFORMANCE PRODUCTS & ACCESSORIES

## **RIVA Sea-Doo S3/T3 Rear Exhaust Outlet Kit**

***PART# - RS15090-ET***



**APPLICATION(S):** Sea-Doo RXT/GTX S3 (Suspended & Fixed Deck) & RXP-X T3 iControl Models

This billet outlet kit is intended to complement our Pro-Series Water Box (part# RS16091) and includes templates for proper location installation in all RXT/GTX S3 models and RXP-X T3 models.

These instructions are broken up into two sections.

1. RXT/GTX S3 Suspension & Fixed Deck iControl Models
2. RXP-X T3 iControl Models

After installing this Billet Rear Exhaust Outlet Kit please follow the installation instructions supplied with your Pro-Series Water Box to complete the installation.

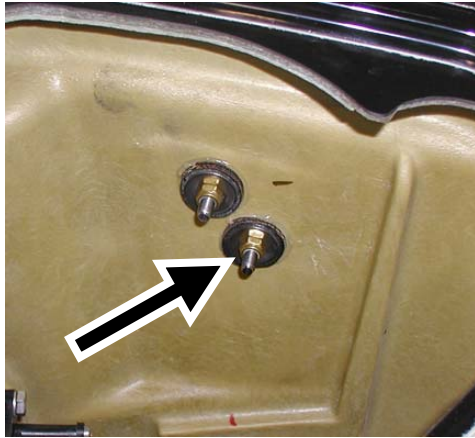
**Required Specialty Tools**  
2-3/4" Hole Saw Bit

**Part#**  
N/A

# 1. RXT/GTX S3 Suspension & Fixed Deck iControl Models

## - INSTALLATION INSTRUCTIONS -

At transom, left side of craft, remove lower nut and washers (2) securing tie down cleat to hull.



Modify washers as shown below.



Replace washers with flat side facing downward towards bottom of craft. Secure with stock nut. **NOTE: Do not over tighten nut.**

On left side of transom install supplied template (last page of instructions).



Locate bolt holes with a pen or marker.

Using a short straight edge draw two diagonal intersecting lines between bolt holes.



Mark hull at center of shaded circle (cross-hairs) using a punch or scribe.

Remove template and create opening for Rear Exhaust Outlet using a 2-3/4" hole saw bit. If using a smaller size hole saw bit we recommend cutting out shaded circle of template **after locating center on hull** and tracing circle to indicate maximum hole size. **NOTE: Do not exceed 2-3/4" in diameter.**

Install supplied billet exhaust outlet from outside and align so that 'R' logo is at bottom (6 o'clock). Drill bolt holes (4). Remove outlet. Thoroughly clean inside and outside of hull.



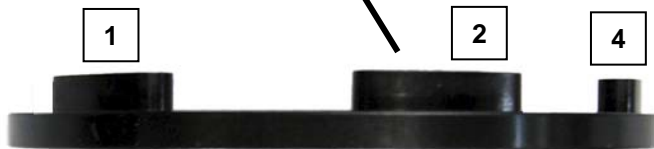
Install supplied rubber gasket onto billet exhaust outlet flange. **NOTE: DO NOT APPLY SILICONE TO RUBBER GASKET.**

Install outlet into hull from outside. From inside of hull place supplied billet onto exhaust outlet.

**2011 & Older Models** install with stand-off's away from hull.

**2012 & Newer Models** install with stand-off's against hull.

Stand-offs are to be placed at bolt holes 1, 2 & 4.



#### 2012 & NEWER BOLT LOCATION REFERENCE:



Secure outlet using supplied bolts (4). **NOTE: Apply blue Loctite to bolts. Do not over tighten bolts.**

**TORQUE SEQUENCE:** Tighten bolts in a criss-cross sequence turning each one 2~3 revolutions at a time until snug. Apply final torque in a criss-cross sequence until tight.



**WARNING:** Over tightening bolts will result in over compressing and distorting rubber gasket.

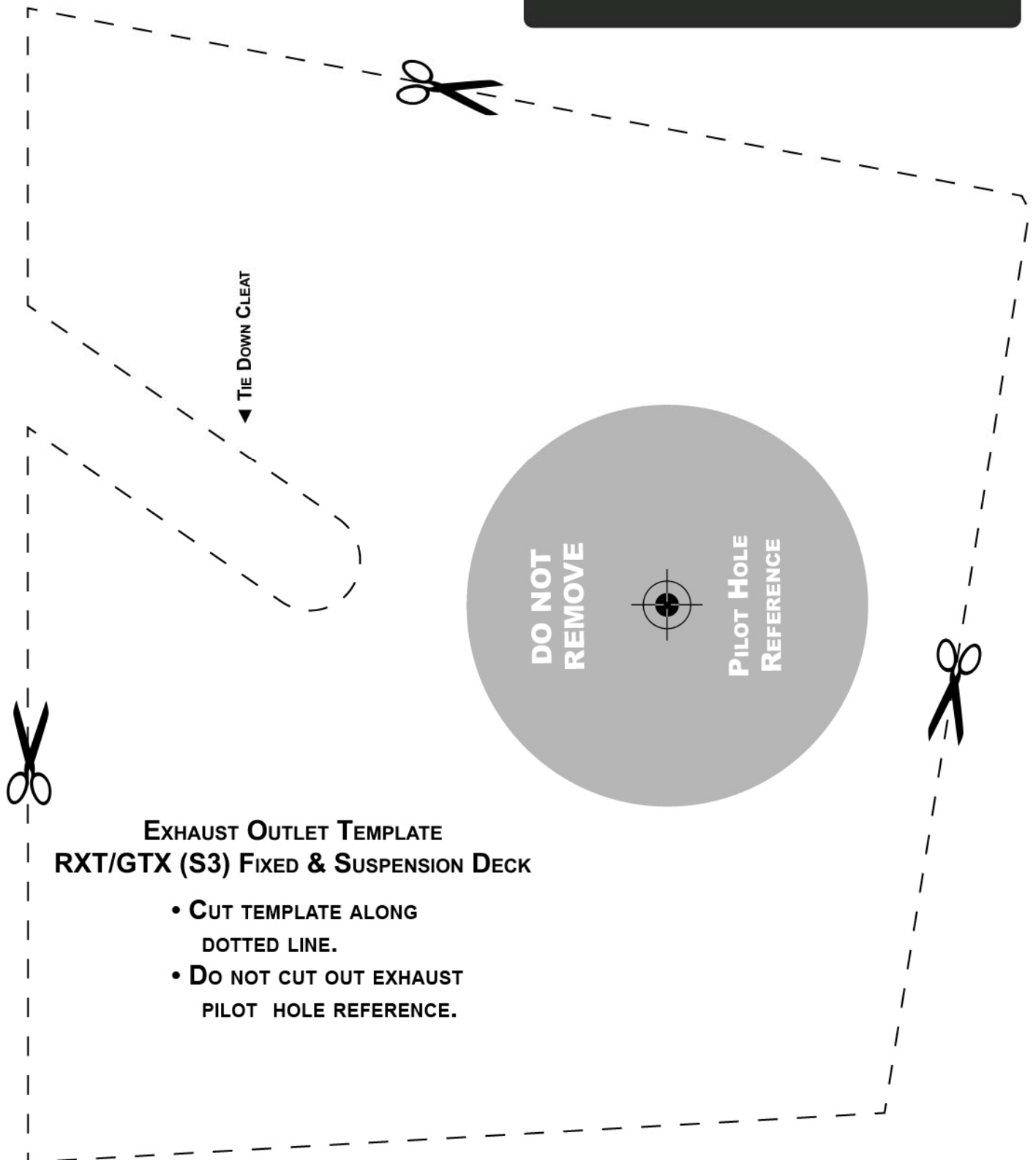
Install supplied block-off onto stock exhaust outlet. Secure with supplied clamp. **NOTE: Do not over tighten clamp.**



Please refer to installation instructions supplied with RIVA Pro-Series Water Box (part# RS16091) to complete the installation process.

**IMPORTANT:**

**BEFORE PRINTING MAKE SURE THAT  
“OUTPUT OPTION/PRINTING TYPE/SCALING”  
ARE SET TO NONE IN THE PRINT DIALOG  
PROPERTIES WINDOW FOR YOUR PRINTER.**





## 2. RXP-X T3 iControl Models

### - INSTALLATION INSTRUCTIONS -

On right side of transom install supplied template (page 3 of these instructions).



Mark hull at center of shaded circle (cross-hairs) using a punch or scribe.

Remove template and create opening for Rear Exhaust Outlet using a 2-3/4" hole saw bit. If using a smaller size hole saw bit we recommend cutting out shaded circle of template **after locating center on hull** and tracing circle to indicate maximum hole size. **NOTE: Do not exceed 2-3/4" in diameter.**

Install supplied billet exhaust outlet from outside and align so that 'R' logo is at bottom (6 o'clock). Drill bolt holes (4). Remove outlet. Thoroughly clean inside and outside of hull.



Install supplied rubber gasket onto Billet Exhaust Outlet flange. **NOTE: DO NOT APPLY SILICONE.**

Install outlet into hull from outside. Slide Billet Locking Collar over exhaust outlet from inside of hull. **NOTE: DO NOT APPLY SILICONE.**



Secure using supplied bolts (4). **NOTE: Apply blue Loctite to bolts. NOTE: DO NOT APPLY SILICONE.**

**TORQUE SEQUENCE:** Tighten bolts in a criss-cross sequence turning each one 2~3 revolutions at a time until snug. Apply final torque in a criss-cross sequence until tight.

**WARNING:** Over tightening bolts will result in over compressing and distorting rubber gasket.

Install supplied block-off onto stock exhaust outlet. Secure with supplied clamp. **NOTE: Do not over tighten clamp.**



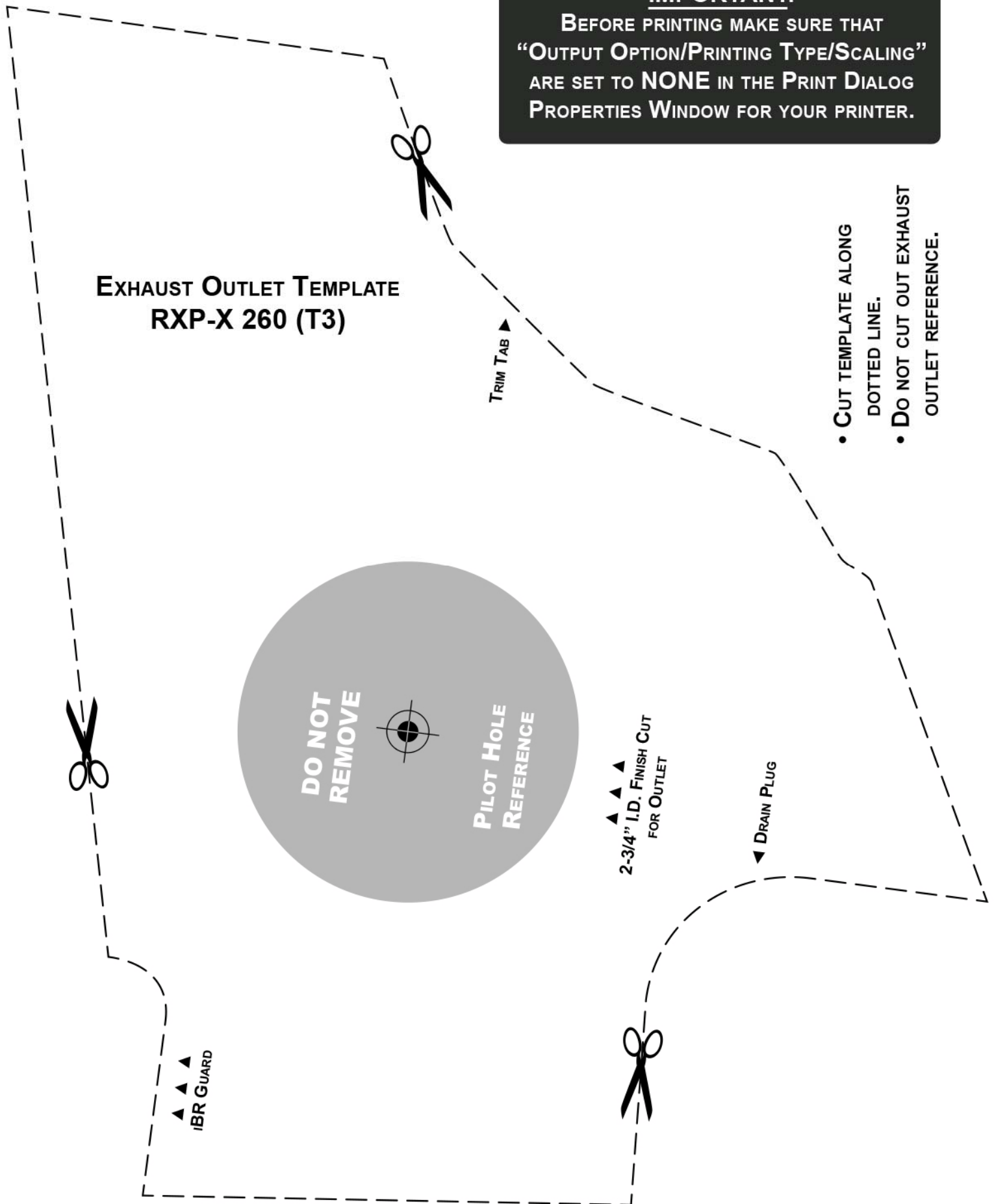
Please refer to installation instructions supplied with RIVA Pro-Series Water Box (part# RS16091) to complete the installation process.

## **IMPORTANT:**

**BEFORE PRINTING MAKE SURE THAT  
“OUTPUT OPTION/PRINTING TYPE/SCALING”  
ARE SET TO NONE IN THE PRINT DIALOG  
PROPERTIES WINDOW FOR YOUR PRINTER.**

### **EXHAUST OUTLET TEMPLATE RXP-X 260 (T3)**

- CUT TEMPLATE ALONG  
DOTTED LINE.
- Do NOT CUT OUT EXHAUST  
OUTLET REFERENCE.



***Remember, the water belongs to everyone.  
Please ride responsibly and respect the environment!***

### **Technical Support**

For answers to questions regarding installation or trouble shooting RIVA Performance Products contact:  
RIVA Technical Support directly at (954) 247-0705 or by e-mail at [tech\\_support@rivamotorsports.com](mailto:tech_support@rivamotorsports.com).

### **Limited Warranty**

RIVA Rear Exhaust Outlet Kits carry a 90--day limited warranty to the original purchaser. They are warranted to be free of defects in materials and workmanship under normal use and service. Customer modified components will be void of warranty. This warranty is limited to defects in the primary components only. Finish and/or wear marks in or on primary components are not covered under this warranty.

RIVA Racing's liability is expressly limited to the repair or replacement of the components contained within or associated with this kit. RIVA Racing agrees to repair or at RIVA's option, replace any defective unit without charge, if product is returned to RIVA Racing freight prepaid within the warranty period. Any equipment returned which, in RIVA's opinion, has been subjected to misuse, abuse, overheating or accident shall not be covered by this warranty.

RIVA Racing shall have no liability for special, incidental or consequential damages or injury to persons or property from any cause arising from the sale, installation or use of this product.

No other warranty, express or implied, including, but not limited to the implied warranties of merchantability and fitness for a particular purpose, applies. Various states do not allow for the limitation of incidental or consequential damages and therefore the above exclusion or limitation may not apply to you.

Warranty does not include the expenses related to freight or transportation of parts or compensation for any inconvenience or loss of use while being repaired. A copy of the original invoice and a Return Authorization Number (RA#) must accompany all warranty claims.

Warranted replacement parts will be returned freight collect.